

### Noosa Regional Gallery

Riverside, 9 Pelican St  
Tewantin QLD 4565

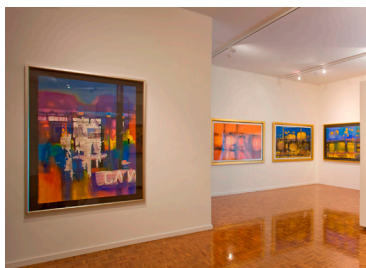
Phone: 07 5329 6145

gallery@noosa.qld.gov.au  
www.noosaregionalgallery.com.au

www.facebook.com/  
noosaregionalgallery

Hours: Tue-Fri 10am-4pm,  
Sat-Sun 10am-3pm

Contact: Nina Shadforth,  
Director



*An Artist's Journey, Rex  
Backhaus-Smith exhibition at  
Noosa Regional Gallery, 2009*

Credit: Noosa Regional Gallery

Presented by Museums & Galleries  
Queensland in partnership with Noosa  
Regional Gallery.

### Our Profile

Noosa Regional Gallery is located on the ground floor of Noosa Council's main office, situated in the small village of Tewantin on the picturesque Noosa River. It is accessible by road or river. It is the Sunshine Coast's premier gallery and a major contributor to the creative industries in the region. It is the largest visual arts space on the Sunshine Coast.

The gallery presents a diverse annual program, featuring exhibitions by local, national and international artists. A dynamic range of activities and events designed for all ages accompanies the exhibitions.

The Gallery is supported by an energetic volunteer group and long-standing Friends Noosa Regional Gallery. Local artisans feature in the gift shop, with a range of unique homewares, jewellery, books and gift cards.

After your visit to the Gallery, be sure to sit outside and enjoy the fantastic river views.

### Did you know?

Did you know Noosa Regional Gallery engages many local artists to contribute to the gallery's program including exhibitions, the gift shop and to facilitate workshops by sharing their knowledge?

Did you know Noosa Regional Gallery initiated Floating Land art and environment symposium in 2001? The gallery has an extensive archive of digital images from photographers who have documented each program since its inception.

Did you know younger visitors are a focus audience group of the Gallery? Programs include an after school art program, family day once a month and school holiday workshops.

