

2020

ANNUAL REPORT

MUSEUM AND GALLERY SERVICES QUEENSLAND LIMITED

TRADING AS MUSEUMS & GALLERIES QUEENSLAND

122 Gerler Road, Hendra, Qld 4011

ABN 32 109 874 811

ACN 109 874 811

Index

Please note that links to website pages referenced in this Annual Report will not be valid from mid-2021 when M&G QLD's new website is launched.

M&G QLD Organisational Structure	1
M&G QLD Board 2020	2
M&G QLD Staff 2020	3
Chairperson's Report	4
Highlights of 2020	6
Feedback on M&G QLD's 2020 Programs	7
Executive Director's Report	8
Sector Development and Advocacy	
Representation	10
Advocacy	10
Contribution to National and State cultural forums and reviews	
<i>Australian Public Galleries Snapshot</i>	
Sector Development	11
Museum and Gallery Needs Survey	
Gallery and Museum Achievement Awards (GAMAA)	
Mentorship, International Fellowship and Internship Program	
COVID Response and Leadership	
Industry Partnerships	15
Information and Communication	
Publications	17
eNews	17
Websites	17

Enquiries and Referrals	18
Media Reach	19

Training and Professional Development

Standards Review Program	21
Training and Professional Development 2020 Events	21
<i>The Object of Labels</i> Workshop	
<i>Securing Funding</i> Workshop	
<i>Join the Conversation</i> Online Discussion Series	
M&G QLD UQAM Annual Event: <i>Audience Recovery</i> Webinar Series	
Skills Development Workshop Series	
2020 Small Museums Conference	

Exhibition Development and Touring

Exhibition Development and Touring	30
Exhibitions in development 2021/2022	
Audio-Visual Touring Exhibition Resources	42
Artist Touring Mentorship Program	42
National Exhibitions Touring Support (NETS) Australia	43

Funding Partners and Financial Support

Sponsors, Industry Partners and In-Kind Support

APPENDICES

Appendix 1:

M&G QLD Company Member: Australian Museums and Galleries Association (Queensland)	50
---	----

Appendix 2:

M&G QLD Company Member: Public Galleries Queensland	50
---	----

Appendix 3:

Training and Professional Development and Sector Development Programs:

2020 Events	51
-------------------	----

Appendix 4:

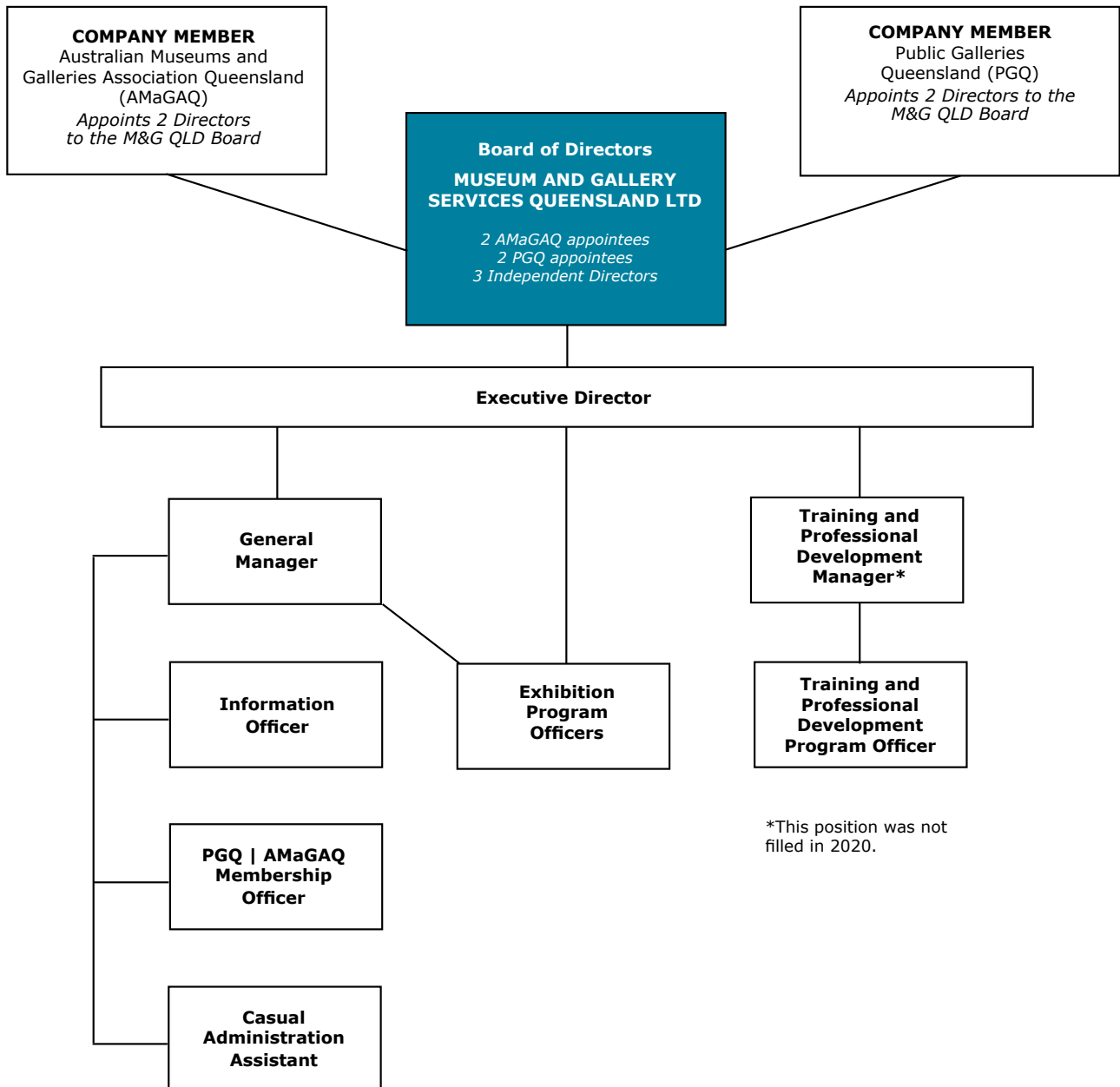
Training and Professional Development and Sector Development Programs:

2020 Presentation and Video Access	54
--	----

Appendix 5:

2020 Touring Exhibition Program and Statistics	55
--	----

M&G QLD Organisational Structure



M&G QLD Board 2020

Emma Bain
Gallery Director, Redland Art Gallery

*Public Officer
Director*

Karina Devine
Director, Warwick Art Gallery

*Chairperson
Director*

Celestine Doyle
Consultant, Celestine Doyle Fundraising

Director

Tony Martin
CEO, Qantas Founders Museum

Director from 17.02.20

Andrew Moritz
CEO, Transport Heritage NSW

*Deputy Chairperson
Director*

Anna Thurgood
Engagement Officer,
State Library of Queensland

Director

Five meetings of the M&G QLD Board of Directors were held in 2020.

Name of Director	No. of meetings eligible to attend	No. of meetings attended
Emma Bain	5	3
Karina Devine	5	5
Celestine Doyle	5	4
Tony Martin	5	4
Andrew Moritz	5	5
Anna Thurgood	5	4

M&G QLD Staff 2020

Rebekah Butler

Executive Director

Debra Beattie

General Manager

Company Secretary

Melissa Fletcher

Information Officer

Leisha Walker

Training and Professional Development Program Officer

Andrea Higgins

Exhibition Program Officer

Bonnie Melrose

Exhibition Program Officer to 16.12.20

Rachael De Groot

Exhibition Program Officer

Karika Ashworth

PGQ | AMaGAQ Membership Officer

Sara Dawson

Casual Administrative Assistant



Chairperson's Report

It is a privilege to report each year on Museums & Galleries Queensland's accomplishments, but this year, with so many unforeseen challenges, I am especially pleased to share with you the Company's 2020 Annual Report.

The social and economic consequences of COVID have been significant for our sector, and have resulted in increased demand for M&G QLD's services. I am exceptionally proud of our Executive Director and Staff, and the team's outstanding work and leadership in responding to the pandemic.

M&G QLD adapted with agility, prioritising Staff welfare and business continuity. Support for our sector focussed on advocacy, workforce support and the provision of resources and digital content. Undeterred by working from home, M&G QLD's Staff found new ways to engage with and support our sector. These efforts saw a dramatic increase in online engagement, including increased downloads of resources and filmed content.

As Queensland's peak professional body, M&G QLD maintained strong communication with government about the experiences of our sector and ensured that the latest information was shared when new public health directives or government initiatives were released. The Company also provided considered perspectives on sectoral issues to national bodies, and through information requests, forums and government enquiries.

Early in 2020, M&G QLD's Board and Staff embarked on developing a new strategic plan for the next four years. With the advent of COVID this work was suspended, however we look forward to continuing this process in 2021 in readiness for applying to Arts Queensland's next round of



multi-year operational funding. The sector's responses to M&G QLD's 2020 Museum and Gallery Needs Survey will assist to inform this important living document and our future direction.

M&G QLD continues to be a responsive organisation focussed on supporting and advancing our sector. We are a values-driven Company with outstanding leadership and skills that achieve results through the care and commitment of our

Staff. Underpinning this is our organisational governance and high standards of conduct and compliance.

In 2020, M&G QLD reviewed existing Company policies and adopted new ones including:

- *Whistleblower Policy*
- *Cyberbullying Policy*
- *Home Working Arrangements Policy*

These documents form part of M&G QLD's risk management framework and are important to maintaining the Company's solid reputation.

I would like to thank each of my fellow Directors – Andrew Moritz, Emma Bain, Anna Thurgood, Celestine Doyle and Tony Martin – who generously shared their wisdom and expertise to support M&G QLD through this difficult year.

I am pleased to acknowledge the sector's member organisations, Public Galleries Queensland and Australian Museums and Galleries Association (Queensland), who continue to support the work of M&G QLD through representation on the Company's Board of Directors and other program initiatives.

Our sector has been resilient in the face of the pandemic and natural disasters. On behalf of

M&G QLD's Directors and Staff, I thank you for your support through what has been a difficult year, but I also acknowledge the support you have shown one another. In times of difficulty, it is comforting to know that collectively we can rally and provide strength to each other.

Karina Devine
Chairperson

Highlights of 2020

518 participants took part in **16** M&G QLD training and professional development activities in 2020. **97%** of participants rated these activities overall as 'Excellent' (71%) or 'Good' (26%).

M&G QLD's 2020 touring exhibition program presented **9** exhibitions to **30** venues in Queensland and nationally, and attracted **86,506** visitors. M&G QLD's touring exhibitions profiled the work of **142** artists and **14** curators.

100% of touring exhibition venues rated the quality of M&G QLD's services as 'Excellent' (84%) or 'Good' (16%).

96% of venues rated the response from the public to M&G QLD's 2020 touring exhibitions as 'Excellent' (64%) or 'Good' (32%).

M&G QLD continued delivery of its Artist Touring Mentorship Program in 2020, mentoring one individual Queensland artist; a group of artists from Artel, CPL's creative industries studio, Redcliffe; and members of the Botanical Artists' Society of Queensland, to build their professional knowledge and skill base in the area of exhibition touring. **100%** agreed that they benefitted from the program.

M&G QLD Staff responded to more than **2,780** client service enquiries in 2020 – an increase of **88.3%** on the previous year.

M&G QLD's website registered **379,733** entry page views in 2020 – an increase of **3.8%** on 2019. M&G QLD's Instagram followers reached **1,098**, an increase of **20.1%**.

NETS Australia's website registered **17,019** page views in 2020.

M&G QLD published **8** editions of its **COVID Safe Plan Resource**. The sector accessed our COVID resources **4,001** times.

The total number of M&G QLD resources downloaded in 2020 increased to **38,440** – up **45.6%** on 2019. Engagement with online film content increased to **1,444** views – up **76.3%** on 2019.

M&G QLD's program activities generated more than **634** mentions in digital, print, radio and television media.

M&G QLD undertook a major **Museum and Gallery Needs Survey** to inform our programming, research and advocacy.

M&G QLD, in partnership with Public Galleries Association of Victoria, published the **Australian Public Galleries Snapshot**, on behalf of the National Public Galleries Alliance. This report collated the data of **197** of our country's estimated 408 small-to-medium public galleries.

Feedback on M&G QLD's 2020 Programs

Thank you to Museums & Galleries Queensland for offering so much support and resources at this time.

Thank you so much for the work the team has put into this document. It is incredibly helpful.

...thank you to your team for preparing and sending this information. We are definitely using it to prepare our COVID-19 Safe Plan to be able to open our little museum...

Responses from Queensland museums and galleries to M&G QLD's COVID-19 resources.

... Complementary qualities of respect, recognition and relationships of trust have enabled M&G QLD to take a decisively strong national leadership role in advocating for the public galleries sector.
Western Australian gallery network

I was able to bring a problem to solve and gain valuable ways forward. Learn up-to-date industry skills, networking. From the workshop I can produce activities for volunteers wanting to help with the collection and innovative ways to promote our museum/gallery.'
Participant, Community Heritage Grant Workshop Series

I love reading your weekly e-newsletter – it's one of the best!
M&G QLD eNews subscriber

Visitors enjoyed a very different exhibition – one that was very provocative, intriguing and fun. Such diversity of sculptural styles as well as a broad range of topics to engage with. Many were surprised at the amazing standard of the exhibition in such a little country town – one visitor commented that they "thought [they] must have been in GOMA". It is so exciting that people in regional areas can experience art from cutting edge Australian artists that might usually only be found in metropolitan settings. The Educational Kit was excellent and a great resource to discuss with teachers and plan tours and activities for schools and other public programs.

Safe Space contemporary sculpture touring exhibition venue

I really enjoyed how each seminar had a different topic and angle. Having some big data to look at was really beneficial for me.

Participant, M&G QLD | UQAM Annual Event – Audience Recovery Webinar Series

I knew you were all good, but working so closely with you has given me an insight into how even more amazing you all are.

Artist Touring Mentorship Program participant

Executive Director's Report



2020 tested our sector and wider communities in ways that we could not have imagined.

COVID-19 hit following an extreme season of bushfires, drought and other natural disasters.

Early in the year, the pandemic saw

the closure of museums and galleries across the nation. To its credit, our sector responded admirably, taking on new work practices and initiatives to support their communities and keep their audiences engaged in arts and culture.

Here at M&G QLD, we also took our response to COVID seriously. We found new ways to serve our sector and to make a difference across all program areas. Whether it was rolling out new online programs to keep our sector connected; publishing COVID resources informed by changing public health directives; or advocating to local, state and federal governments, we supported our State's public museums and galleries to navigate these challenging times.

Our strategy was to keep our people safe, protecting their positions and wellbeing; to serve and safeguard our sector to the best of our ability; and to ensure the Company's viability beyond the pandemic.

M&G QLD's Annual Report contains a deeper look at the impact of our activities in 2020 and tells an impressive story about our reach, leadership and outcomes.

None of this work would have been possible without our remarkable team, our Board of Directors, and our network of industry partners, advocates and supporters.

M&G QLD's values are embedded in all that we do. I am privileged to work alongside Staff who share these ideals and are dedicated to our sector. Their genuine care, resilience and professionalism in the way they have responded to the year's challenges has been truly commendable. To each of them, I extend my heartfelt thanks – Debra Beattie, Leisha Walker, Andrea Higgins, Bonnie Melrose, Rachael De Groot, Melissa Fletcher, Karike Ashworth and Sara Dawson.

In December 2020, we farewelled long-time Staff member Bonnie Melrose. While at M&G QLD, Bonnie made a wonderful contribution to our organisation and wider sector through her passion and commitment. We wish her every success in her new positions at Redland Art Gallery and Adderton: house & heart of mercy.

COVID brought challenges for all of us and, despite the temporary shut-down of our in-person programming, M&G QLD served more than 87,000 people and responded to over 2,700 client service enquiries – up 88.3% on 2019.

M&G QLD's Training & Professional Development Programs provided avenues for our sector to remain connected and to learn from and support each other as the year unfolded.

Exhibition Development & Touring Program Staff responded to venue needs, rescheduling exhibition itineraries and working with our partners and artists to deliver meaningful online activities to keep audiences across the country engaged with our touring programs.

Our advocacy work called for increased support, job retention and strengthening the connection between museums and galleries and their communities during the pandemic.

The response I received from writing to Queensland's mayors was heartening. Many

expressed the lengths they were going to in supporting their communities, thanking M&G QLD for our COVID support and encouraging us to continue our lobbying for local government eligibility for Federal Government incentives such as JobKeeper.

An important measure of our role and its value is how our programs and services are rated by our constituents and others who engage with M&G QLD. I am proud to report that we achieved a strong result with 98.6% rating the quality of our services as 'Excellent' (77.6%) or 'Good' (21%).

While COVID dominated much of our activity in 2020, M&G QLD achieved other significant outcomes for both the Company and the sector. These include:

- Securing funding from the Gambling Community Benefit Fund towards creation of a new Company website – due for release in 2021;
- Publishing the *Australian Public Galleries Snapshot* on behalf of the National Public Galleries Alliance in June 2020. This 'first of its kind' report rated in *ArtsHub's* The Big List: the Visual Arts in 2020, by Gina Fairley, 15 December 2020.
- Undertaking a detailed Museum and Gallery Needs Survey to inform future programming, research and advocacy.
- Drafting a new Facility Report for Australian and potentially New Zealand public museums and galleries on behalf of NETS Australia. This is currently in its consultation phase and due for release in 2021.

During the course of the year, I also had the pleasure of working with peers across the country, representing and advocating for our sector and keeping its needs at the forefront of government and stakeholders. This collaboration and information sharing was a vital part of our COVID response. My particular thanks to Anne Robertson, Public Galleries Association of Victoria, and Michael Rolfe, Museums & Galleries of New South Wales.

The State Government's decision to extend the 2017–2020 Organisations Fund to 2021 was a welcome relief, easing workload and financial pressures and enabling us to focus on our COVID response. It also enabled us to plan for 2021 knowing we had this financial security.

M&G QLD acknowledges the support we receive from State Government through Arts Queensland's Organisations Fund, Visual Arts and Craft Strategy funding and project grants. In 2020, we also appreciated the support received through the Federal Government's stimulus packages and the Queensland Museum Network's generous tenancy assistance. With our income-earning capacity significantly reduced, this support contributed greatly to retaining Staff and reducing the financial impact of this challenging year.

In late 2020, M&G QLD's General Manager, Debra Beattie, and I worked hard to secure further support from the Tim Fairfax Family Foundation for 2021. We extend our sincere gratitude to the Foundation's Staff and Trustees for their tremendous support and continued belief in our organisation.

Looking ahead, it is difficult to know with any certainty what the next twelve months will hold, however we remain vigilant and are fortunate to have a highly capable team and strong foundations in place to enable us to respond appropriately.

My special thanks to each of our partners who make our work possible, and to our sector's remarkable Staff and Volunteers – you and your organisations are at the heart of all we do.

Rebekah Butler
Executive Director

Sector Development and Advocacy

Representation

During 2020, Staff members of M&G QLD provided input and advisory services to the sector, including representation on:

- National Exhibitions Touring Support (NETS) Australia.
- National Standards Taskforce.
- Australian Museums and Galleries Association Emerging Professionals Network.
- Arts Queensland Industry Experts and Peers.
- Arts Queensland Arts Touring Panel.
- State Library of Queensland JOL Community History Awards Assessment Panel.
- Regional Arts Fund Community Project Grants Assessment Panel.
- Regional Services Networking Group.
- National Archives of Australia Queensland Consultative Forum.
- Griffith Centre for Cultural Research Advisory Board.
- National Public Galleries Alliance.
- Somerset Regional Council – The Condensery Advisory Committee.
- The University of Queensland Master of Museum Studies Program working party.
- Queensland Children’s Hospital Arts and Health Advisory Committee.

M&G QLD Staff also participated in and contributed to the following sector programs/events:

- Delivered a session on industry networks and the *National Standards for Australian Museums and Galleries* to The University of Queensland postgraduate Museum Studies students.
- Attended and presented at Creative Arts Alliance’s South East Queensland North Galleries Forum, Redland Performing Arts Centre, Cleveland.
- Hosted Brisbane’s Living Heritage Network’s social media workshop.
- Attended and presented at the Small Museums Conference held at Historic Ormiston House, Redlands.

- Participated in planning meetings with Landsborough Museum and Sunshine Coast Council.
- Attended the Queensland College of Art, Griffith University, ‘Save our Studios’ rally.
- Contributed to Q-DIS: Queensland Disaster Information Network.
- Assisted Queensland regional galleries and museums with enquiries on strategic planning; environmental controls; service agreements with councils; sector benchmarking; and organisation and management structures.

Advocacy

❖ Contribution to National and State cultural forums and reviews

During 2020, Staff and Board members of M&G QLD contributed to a range of cultural forums and reviews, to ensure that the museum and gallery sector’s voice was represented in the development of new policies, strategies and programs at state and national level. These included:

- Participation in Arts Queensland’s Consultation Forum – Touring Sector (Visual Arts).
- Participation in Arts Queensland Sector Consultation Forum – Multi-Regional Group.
- Participation in Arts Queensland’s Playing Queensland Fund consultations.
- Participation in Arts Queensland and Queensland Health meetings on COVID-19 measures.
- Participation in fortnightly National Visual Arts Sector Roundtable meetings.
- Meetings with Office for the Arts, Collections Access | Collections and Cultural Heritage staff.
- Publishing *Australian Public Galleries Snapshot* and leading the national media campaign on behalf of the National Public Galleries Alliance.
- See M&G QLD’s COVID Response and Leadership on pages 13–14.



❖ **Australian Public Galleries Snapshot**

On 24 June 2020, the National Public Galleries Alliance launched the *Australian Public Galleries Snapshot*. This report collates the data of 197 of our country's estimated 408 small-to-medium public galleries. It is the most detailed overview of the sector to date and will help our local, state and federal stakeholders and wider communities to better understand the contribution of our public gallery sector to the social, cultural and economic wellbeing of our nation.

The report draws on the best available, nationally consistent information collected over a twelve-month period in 2017 and 2018.

National Gallery of Australia Director, Nick Mitzevich said, *"This Snapshot demonstrates the potency and the extraordinary impact public galleries make into the cultural and economic fabric throughout Australia. The significance of our gallery sector in enlivening regional, state and national centres is reinforced by this report"*.

View the report at <http://www.magsq.com.au/cms/page.asp?ID=10613>

Australian Public Galleries at a glance

[Based on available data]:

- Local Government is the largest investor in small-to-medium public galleries (51% of the 197 public galleries captured in the Snapshot are owned or operated by Local Government).
- Small-to-medium public galleries employ more than 900 FTE staff.

- Annually, over 16.5 million people visit our country's public galleries including state, territory and national public gallery institutions.
- 44% of visitation is to small-to-medium public galleries in regional areas, compared to 56% to small-to-medium public galleries in metropolitan areas.
- Annually, more than 5,000 volunteers donate their time and expertise to small-to-medium public galleries. Quantified, the value of this volunteer labour is \$15.9 million.

The *Australian Public Galleries Snapshot* is a research initiative prepared by Museums & Galleries Queensland and Public Galleries Association of Victoria on behalf of the National Public Galleries Alliance.

Members of the National Public Galleries Alliance: Art on the Move; Australian Craft and Design Centres; Contemporary Art Tasmania; Galleries West; Museum and Art Gallery of the Northern Territory; Museums & Galleries of New South Wales; Museums & Galleries Queensland; Public Galleries Association of Victoria; Public Galleries Queensland; Regional Galleries Association of South Australia; Regional & Public Galleries Association of New South Wales; and University Art Museums Australia.

Sector Development

❖ **Museum and Gallery Needs Survey**

In 2020, M&G QLD conducted a major survey of public galleries, museums and other cultural organisations in Queensland.

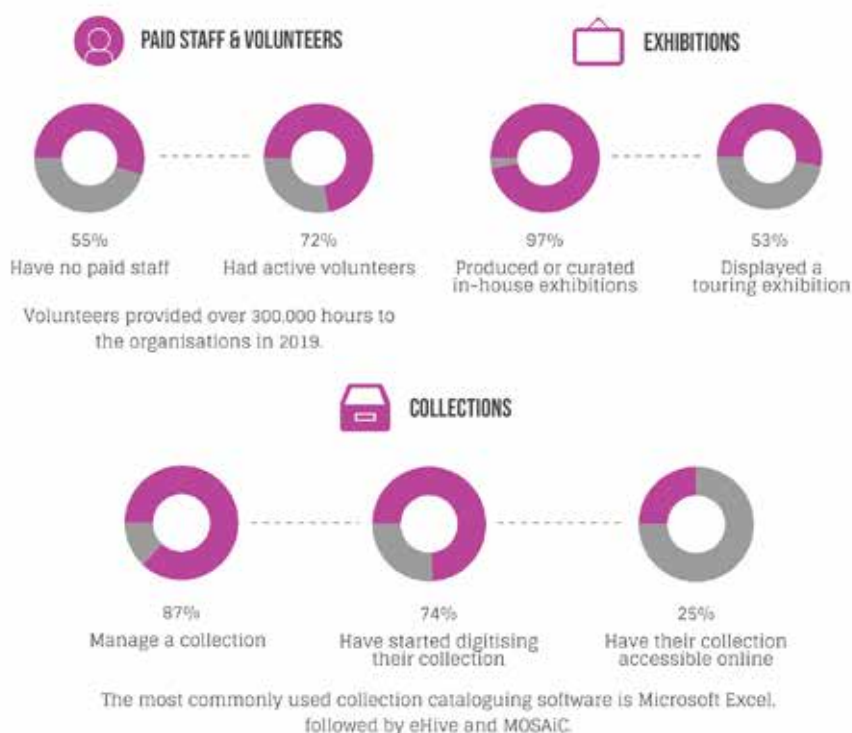
The purpose of this survey was to help promote tourism to museums and galleries, and to provide valuable information so that M&G QLD can advocate to government to better support the sector and each organisation. We also asked for feedback on M&G QLD's services and programs to guide future programming.

So, what did we learn? Insights from the survey (of those who responded):

MUSEUM & GALLERY NEEDS SURVEY

[INSIGHTS]

In 2020, M&G QLD conducted a major survey of public galleries, museums and other cultural organisations in Queensland. Here's what we learnt...



M&G QLD has helped over half of respondents develop skills and make connections, and 40% to improve their professional practice.

Engagement with M&G QLD:

- 64% have attended a M&G QLD workshop, seminar, conference and/or networking event.
- 62% have accessed resources via our website in the last 5 years.

As well as quantitative data, the survey asked for qualitative feedback on M&G QLD's programs. See page 13 for some of the responses from

past Gallery and Museum Achievement Award recipients.

Also as part of this survey, we received a number of requests and suggestions for future programming. This feedback is helpful in evaluating our programs and services and will inform M&G QLD's strategic planning and direction.

❖ Gallery and Museum Achievement Awards (GAMAA)

M&G QLD did not present the annual Gallery and Museum Achievement Awards (GAMAA) in 2020 due to the impacts of COVID-19 on the sector.

During the year, planning commenced to consider either a 'live' event or an online event for the 2021 GAMAA, subject to the status of COVID.

As mentioned on page 12, M&G QLD's Museum and Gallery Needs Survey produced the following comments from past GAMAA recipients on how the Awards have impacted their organisations:

'Receiving the GAMAA helped provide more exposure of our facility to the wider audience.'

'It's a great initiative for peer review and to recognise team efforts and contributions.'

'Industry recognition has allowed us the grounds to further expand the program with partnerships and share methodologies with other institutions.'

'Recognition and celebration of milestone achievements. It created a sense of pride within the Museum team. Valuable marketing for the Museum by highlighting achievements, and raising the Museum's profile informs the Board that we are achieving goals when recognised by industry peers.'

❖ Mentorship, International Fellowship and Internship Program

M&G QLD's plan to deliver a Mentorship, International Fellowship and Internship Program in 2020–2022 was put on hold due to COVID-19. The program was initiated to support paid staff and volunteers in public, not-for-profit museums and galleries located in Queensland to access expertise in cultural institutions within Australia and overseas for the purpose of professional development.

M&G QLD continues to assess the program, including considering an alternative model of delivery.

This program is supported by the Queensland Government through Arts Queensland.

❖ COVID Response and Leadership



In 2020, M&G QLD actively worked with our constituents and stakeholders to provide leadership, advocacy and up-to-date information to help our sector navigate these unprecedented times.

Acknowledging the seriousness and potential impact of COVID, in March 2020, prior to the Federal Government closure of museums and galleries, M&G QLD and Museums & Galleries of New South Wales (M&G NSW) released a joint statement encouraging all volunteer-run museums and galleries to close to the public and for all professionally-staffed organisations to temporarily suspend their volunteer support programs. These recommendations recognised that volunteer groups are largely comprised of older or at-risk people.

To further support the sector, M&G QLD developed and widely promoted two major resources:

- *COVID-19 Information Resources & Support* (published April and August 2020); and
- *COVID-19 Safety Plan Resource* (first published in May 2020 and now at v8). This continues to be updated as the Queensland Government's roadmap to easing of restrictions progresses.

M&G QLD was the first to develop sector-specific COVID resources, and shared this work with our colleagues interstate to assist them when drafting their own industry documents/resources. Our proactivity and leadership during this period is both appreciated and acknowledged by peers nationally.

In 2020, M&G QLD lobbied for measures to support the sector, engaging with all tiers of government. This included:

- Writing to Queensland Mayors, providing them with a copy of the *COVID-19 Safety Plan Resource*, and advocating for their continued support of their public galleries and museums through retention of staffing levels, minimising impacts to operational budgets, and providing subsidies and/or discounts to volunteer-run organisations.
- Advocating to State Government for continued support of our public museum and gallery sector through pushing up to Federal Government the need to revise JobKeeper eligibility to include Local Government and university staff; presenting the issues impacting Queensland's museum and gallery sector at the Meeting of Cultural Ministers; and increasing support for the volunteer-run sector.
- Liaising with, participating in forums and providing data to State Government.
- Through the National Public Galleries Alliance (NPGA), M&G QLD and Public Galleries Association of Victoria (PGAV) prepared a national sector response to be presented at the Meeting of Cultural Ministers, and to support the Australian Museums and Galleries Association's response around the impacts of COVID-19 and advocacy for the sector.
- Providing Regional Arts Australia with data on Queensland's public museums and galleries to reference in the Senate Committee Hearing into the Australian Government's response to the COVID-19 pandemic.
- Through the NPGA, M&G QLD and PGAV submitted a national sector response to the Federal Government's Standing Committee on Communications and the Arts inquiry into Australia's creative and cultural industries and institutions. As a member of NETS (National

Exhibition Touring Support) Australia, M&G QLD contributed to NETS' submission which focused on the impacts of COVID on visual arts touring. M&G QLD also made its own submission reiterating the statements made by NPGA and NETS, and focussing on the impacts of COVID on Queensland's public museums and galleries.

M&G QLD's program delivery and services create opportunities for important conversations, inclusion and connectivity. This has been particularly evident during COVID, where M&G QLD has responded directly to needs, engaging with educators, industry professionals and volunteers to create safe, online information-sharing opportunities to support our sector, audiences and communities and to collaboratively and creatively identify ways to improve wellbeing and reduce feelings of isolation and disconnect.

In 2020, a significant portion of our Training & Professional Development programming was moved online and delivered via Zoom conversations and webinars. Many of these sessions were recorded and published on our website to extend their reach to regional Queenslanders and become ongoing resources. New initiatives such as our *Join the Conversation* series will continue beyond 2020, providing a safe online forum for the sector to respond to and discuss key topics. This program aims to support museum and gallery staff and volunteers, and was particularly valuable for those working from home during COVID. For further details see page 22. In partnership with The University of Queensland Art Museum and UQ Museum Studies Program, M&G QLD presented a month-long series of free webinars on the challenges that museums and galleries faced in reopening after COVID-19 and physically reconnecting with their visitors. For further details see page 24.

Other advocacy activities included working with *ArtsHub* and M&G NSW to bring awareness to the challenges faced by volunteer-run organisations.

M&G QLD developed new models of public engagement to support our touring exhibition program. This included:

- QR codes and signage to enable visitors to digitally engage with an exhibition's support films instead of interacting with the supplied iPad travelling with each show.
- Commissioning films from exhibition artists to further increase access and audience engagement with our touring exhibitions.
- Live Curator and Artist Talk Q&A Zoom events.
- Online/filmed education resources for venues to deliver hands-on workshops/programs to schools and other education audiences.
- Virtual programs e.g. 'Watch Party' live film screening and Q&A with Co-Curators Gail Mabo and Jonathan McBurnie for our touring exhibition *Legacy: Reflections on Mabo*, in partnership with Umbrella Studio Contemporary Arts, Townsville.
- Providing technical support via Zoom when staff were unable to travel to assist with installation.

Our work in supporting the sector during COVID continues to be informed by our conversations with the staff and volunteers on the ground, who are actively supporting their organisations and communities.

M&G QLD drafted a COVID Industry Plan in consultation with the sector, Arts Queensland and Queensland Health. This was submitted to Arts Queensland in December 2020 and is currently being reviewed to reflect the new Queensland Health COVID framework before being adopted/implemented in 2021.

Industry Partnerships

M&G QLD works with a broad range of industry partners to deliver its programs and services (acknowledged on pages 46–49 of this report). Some of the key partners in M&G QLD's 2020 delivery included:

• NETS Australia

The National Exhibition Touring Support (NETS) Australia network comprises Artback NT: Arts Development and Touring; Art on the Move WA; Contemporary Art Tasmania; Country Arts

SA; Museums & Galleries of NSW; Museums & Galleries Queensland; and NETS Victoria.

The NETS Australia network moderates content on the NETS Australia website for each of their respective states and territories, <https://netsaustralia.org.au>

See page 43 for more information on NETS.

• National Standards Taskforce

The National Standards Taskforce (NST) continued to collaborate on planning for the next version of the *National Standards for Australian Museums and Galleries*. This publication demonstrates the Taskforce's commitment to continually review the document so that it remains relevant to the needs of Australian museums and galleries. A list of partners in the NST is provided on page 48. Version 1.5 is available to download from M&G QLD's website.

• National Public Galleries Alliance

Co-convened by Museums & Galleries Queensland and Public Galleries Association of Victoria, the National Public Galleries Alliance (NPGA) is comprised of two national networks and ten state peak bodies and public gallery membership organisations, working collaboratively to support the Australian small-to-medium public gallery sector.

In 2020, NPGA published the *Australian Public Galleries Snapshot* (see page 11) and advocated for the sector during COVID.

• Museums & Galleries of New South Wales (M&G NSW)

M&G QLD continued to collaborate with M&G NSW on the Standards Review Program for sustainable community museums and galleries, including evaluating and improving the program and producing the annual *Standards Community Directory*.

- **Queensland Museum Network
Museum Development Officers
(MDOs)**

M&G QLD continued to work closely with the Queensland Museum Network's Museum Development Officers to support and grow the capacity of the sector in Queensland.

- **Public Galleries Queensland (PGQ)
and Australian Museums and Galleries
Association (Queensland) (AMaGAQ)**

M&G QLD continued to provide office space and administrative support to PGQ and AMaGAQ's part-time Membership Officer, Karike Ashworth. This support has been ongoing since 2004.

M&G QLD partnered with PGQ and AMaGAQ to deliver the online discussion, *Re-engaging volunteers*.

- **Brisbane's Living Heritage Network
(BLHN)**

In 2020, M&G QLD continued to work with BLHN through mutual support and cross-promotion of programs and events.

- **The University of Queensland Art Museum**

For the fourteenth year, M&G QLD collaborated with The University of Queensland Art Museum on the development of an industry professional development event. In 2020, this took the form of a webinar series, *Audience Recovery*.

- **The University of Queensland Master of
Museum Studies Program Working Party**

In 2020, M&G QLD contributed as an industry representative to the review of the Master of Museum Studies program at The University of Queensland.

- **Logan Art Gallery, Logan City Council**

M&G QLD continued its partnership with Logan City Council through Logan Art Gallery on *Safe Space*, a major exhibition of contemporary

Australian sculpture, which continued to tour nationally throughout 2020. See pages 34–36 for more details.

- **Queensland Children's Hospital (QCH)**

M&G QLD is an active advisor and contributor to the Queensland Children's Hospital Arts and Health Program. M&G QLD's Exhibition Program Officer, Andrea Higgins, contributes to a panel of visual and performing arts experts and QCH staff representatives that meet to discuss, plan and action creative projects and outcomes for the Hospital. The panel advises on the purchases of new artworks and gifts to the QCH Artwork Collection. The panel also works to establish relationships with other local organisations to provide additional creative services directly to the children, staff and visitors of the Hospital.

- **Q-DIS: Queensland Culture and Heritage
Disaster Forum**

In 2020, M&G QLD continued to work with conservator, Christine Ianna, to facilitate the sharing of information on disaster preparedness and planning on *Q-DIS: Queensland Culture and Heritage Disaster Forum*. *Q-DIS* is an interactive Facebook page that provides information and support for preparing for and responding to disasters in cultural institutions.

Information and Communication



Publications

- **source**

Due to the impacts of COVID-19, M&G QLD published only two issues of its newsletter, *source*, in Spring 2020 and Summer 2020/2021. *source* is distributed both in hard copy to constituents and online, and features industry news, information and resources, and updates on M&G QLD's programs, events and services, including a calendar of events.

source also promotes M&G QLD's touring exhibitions and provides links to NETS online National Exhibitions Register.

source attracted 246 downloads from M&G QLD's website during the year, and each issue was mailed in hard copy to 391 recipients.

source cover image credit can be found at http://www.magsq.com.au/_dbase_upl/SourceSept2020.pdf

- **M&G QLD | M&G NSW Standards Community Directory**

This joint publication between M&G QLD and Museums & Galleries of New South Wales (M&G NSW) features 252 museums and galleries from Queensland and New South Wales that have completed the Standards Review Program, including contact details, a profile, and details of how they benefited from participating in the program.

The Directory is published in two volumes – Volume I features 2003–2016 participants, and Volume II features 2014–2019 participants. These are available for download on both M&G QLD's and M&G NSW's websites. 185 downloads were recorded from the M&G QLD website over the year.

eNews

M&G QLD distributed 45 eNews and 6 other e-bulletins throughout 2020 to a recipient list of 1,222.

Websites

In August 2020, M&G QLD received a grant from the Queensland Government's Gambling Community Benefit Fund towards development of a new Company website, which will be launched in 2021.

During 2020, M&G QLD's current website recorded a total of 379,733 entry page views* – an increase of 3.8% on 2019.

(*An entry page view is a unique visit and shows which specific pages on the M&G QLD website are used by people to enter.)

Features of M&G QLD's current website include:

- *Find A Museum or Gallery*: A user-friendly searchable database of public galleries and museums in Queensland – viewed 5,626 times throughout the year, up 14.9% on 2019.
- *Find a Resource*: A searchable database of museum and gallery-related fact sheets, publications, conference presentations, useful weblinks, etc. Links to 'Latest Resources' are available from the home page.
- *Latest News*: Provides links from the home page to recent news and events.
- *About Us*: Brief company history, including Annual Reports; profiles on Board of Directors; instructions for making a tax deductible donation to M&G QLD; a media room for easy access to M&G QLD media releases; and credits for the images used on the website.
- *Contact Us*: List of Staff contact details; how to access M&G QLD's social media pages.
- *What's On*: Information on M&G QLD current and past events.
- *Touring Exhibitions*: Information on M&G QLD's current touring exhibition program; past touring exhibition program; exhibitions in development; and links to the National Exhibition Touring Support (NETS) Australia website and exhibition register. It also features an archive of filmed interviews featuring artists from M&G QLD's current and past touring exhibitions.
- *Industry Support*:
Standards Review Program: Information on the M&G QLD Standards Review Program. Includes access to download the *National Standards for Australian Museums and Galleries, v1.5 2016*, and the *M&G QLD | M&G NSW Standards Community Directory*.
Find Funding: A comprehensive listing of metropolitan, state and national funding programs, including philanthropic funding, available to the cultural sector.
Education and Training: Information on tertiary education opportunities and useful websites.
Advocacy: Information on research studies and surveys and resources.
Positions Vacant: Employment opportunities within the sector in Queensland.

Find A Consultant: A searchable database of consultants and suppliers relevant to the museum and gallery sector – viewed 1,763 times throughout 2020, an increase of 48.02% on 2019.

- *GAMAA*: M&G QLD's Gallery and Museum Achievement Awards. It includes information on each event, winners, sponsors, judges and advisory committee.

Other M&G QLD websites include:

www.safespacesculpture.com

www.saltwatercountry.org

www.clevercustodians.com.au

Enquiries and Referrals

In 2020, M&G QLD staff responded to 2,781 enquiries from constituents via phone, email, post and in person – an increase of 88.3% on 2019.

M&G QLD Media Reach



TWITTER



Followers



636

Tweets



48

Impressions



26,708



FACEBOOK



Total likes



2,642

Facebook posts



198

Reach



99,796



INSTAGRAM



Total likes



2,403

Instagram posts



89

Followers



1,098

M&G QLD Media Reach



WEBSITE



Page views



376,733

Downloads



38,440



VIMEO



Plays



1,444

Impressions



22,057

MEDIA



Press releases



1

Media/online mentions



634

Training and Professional Development

M&G QLD Standards Review Program

A joint program with Museums & Galleries of New South Wales

In 2020, M&G QLD took the opportunity to conduct a review of the Standards Review Program.

This joint program for sustainable community museums and galleries, implemented by Museums & Galleries of New South Wales and M&G QLD, supports community museums and galleries through a process of self-review and peer feedback. It provides an opportunity for museums and galleries to assess their practices and policies against the *National Standards for Australian Museums and Galleries*, developed collaboratively by the National Standards Taskforce, and to develop a plan for their future.

The feedback received from past participants and Reviewers indicated that the program is valuable, including comments such as, *"the most valuable part of the Standards is having visits from the Reviewers"*. An internal review identified a few small amendments to be implemented to the program. It will return in 2021 and reflect these improvements.

2020 Events

❖ *The Object of Labels Workshop*

M&G QLD engaged Samantha Littley, Independent Writer and Curator, to deliver the workshop, *The Object of Labels: writing interpretive text for exhibitions*. The workshop was supported by Supreme Court Library Queensland.

The workshop proved so popular that two workshops were held on 21 February 2021. This workshop provided participants with the knowledge, skills and confidence to write effective interpretive text, exploring both the theory and



Participants at the morning and afternoon sessions of *The Object of Labels* workshop.

practice behind good labels. It was an opportunity for attendees to participate in practice-based learning, share their own experiences and contribute to a conversation about how to write labels that visitors want to read.

Twenty-three people attended the first workshop and an additional twenty-three people attended the second workshop. 100% of participants of both sessions rated the workshop as 'Excellent' or 'Good'. Participants commented on the strengths of the workshop:

'Group discussion, with the experiences and lens from the varied group skills set.'

'The encouraging structure for discussion and questions. The content was very relevant, interesting and easily applicable to all our institutions.'

'Samantha's clear explanations and key examples. The practical exercise was good and the group was very open.'

'The instructor was great – obviously very experienced! She provided encouraging feedback, and imparted a lot of practical advice regardless of whether you work in a museum or art gallery.'

Participants also made the following comments in response to 'what will you take away from the workshop?':

'How to think about and plan the label writing process within the context of exhibition design and implementation. How to consider / balance the curator's voice in relation to audience engagement and accessibility.'

'A good understanding of the issues that arise when producing quality labels.'

'More confidence to write my own labels, good prompts to push through writer's block.'

'Importance of bringing to the front of the label the important message when trying to capture your audiences' attention.'

The Object of Labels Workshops were supported by the Visual Arts and Craft Strategy, an initiative of the Australian, State and Territory governments.

❖ **Securing Funding Workshop Mount Isa**

M&G QLD's annual *Securing Funding* Workshop was presented in 2020 at Mount Isa Civic Centre on 11 March 2020. Seven people attended the workshop. Feedback from participants showed 100% rated the workshop overall as 'Excellent'.

Workshop presenters included:

- Leisha Walker, Training & Professional Development Program Officer, Museums &



(L-R) Erica Shaw, Mount Isa Underground Hospital and Museum, in a one-on-one interview with Fran D'Castro, Community Heritage Grants, National Library of Australia.

Galleries Queensland – *Designing a project, Finding the right grant for your project, and Preparing a grant application;*

- Debra Beattie, General Manager, Museums & Galleries Queensland – *Preparing a Budget;*
- Fran D'Castro, Coordinator, Community Heritage Grants, National Library of Australia – *Community Heritage Grants;*
- Kerryanne Farrer, Executive Officer, Flying Arts Alliance – *Regional Arts Fund;*
- Annie Wright, Ambassador, Foundation for Rural and Regional Renewal – *Foundation for Rural and Regional Renewal programs.*

The workshop was supported by all the speakers who made substantial pro-bono contributions to the program.

The Securing Funding Workshop was supported by the Visual Arts and Craft Strategy, an initiative of the Australian, State and Territory governments.

❖ **Join the Conversation Online Discussion Series**

To support museum and gallery staff and volunteers working from home, and to keep the sector connected throughout 2020, M&G QLD organised online discussions via Zoom on a range of topics:

How are you connecting with your audiences?

Led by Leisha Walker, M&G QLD's Training & Professional Development Program Officer, this discussion was designed for gallery and museum staff and volunteers to discuss how they were adapting during the closure period. To ensure

the discussions were interactive and engaging, two sessions were organised and held on 23 April 2020.

Eighteen people attended the first session and twenty people attended the second. There were inspirational discussions with participants sharing the process of developing online tours, videos, resources and programs. These sessions were not recorded.

Developing education resources

On 14 May 2020, the panel discussed which education resources and programs for secondary schools are working best for teachers and home-learners, and what are the best ways for galleries and museums to connect with educators.

Facilitated by Bonnie Melrose, M&G QLD's Exhibition Program Officer, the panel included:

- Katie Gallacher, Ancient History Teacher, James Nash State High School, Gympie;
- Kirsten Murray, Community Education Coordinator, Supreme Court Library Queensland;
- Liz Clout, Head of Department – The Arts, Nambour State College;
- Rebecca McDuff, Gallery Director, Bundaberg Regional Galleries;
- Terry Deen, Head of Learning, Queensland Art Gallery | Gallery of Modern Art.

Fifty-eight people attended and 100% rated this session as 'Excellent' or 'Good', with 97% indicating they had learnt something useful.



Presenters in the *Developing education resources* discussion: (Top L-R) **Kirsten Murray, Leisha Lawrence, Bonnie Melrose;** (Centre L-R) **Katie Gallacher, Rebecca McDuff, Terry Deen;** (Bottom) **Liz Clout.**



Presenters in the *Re-opening strategies and tips* discussion: (Top L-R) **Michelle Stafford, Leisha Lawrence, Rebekah Butler;** (Bottom L-R) **Jim Thompson, Scott Martin, Susan Richer.**

This session was recorded and is available on M&G QLD's website at www.magsq.com.au/cms/page.asp?ID=10609

The recording has been viewed 97 times and had 394 impressions between 14 May and 31 December 2020.

Re-opening strategies and tips

On 4 June 2020, a panel of presenters provided advice and tips to museum and gallery workers to help facilitate a safe and successful re-opening. Facilitated by Rebekah Butler, M&G QLD's Executive Director, presenters included:

- Michelle Stafford, Sector Development Manager, Volunteering Queensland;
- Scott Martin, Executive Director, Business Performance and Infrastructure, Arts Queensland;
- Susan Richer, Director, Development, Arts Queensland;
- Jim Thompson, CEO and Director, Queensland Museum Network.

Eighty-seven people attended the session and 100% of attendees said they found the discussion useful.

This session was recorded and is available on M&G QLD's website, along with COVID resources for museums and galleries, at www.magsq.com.au/cms/page.asp?ID=10611

The recording has been viewed 58 times and had 406 impressions between 4 June and 31 December 2020.

Re-engaging volunteers

In partnership with Public Galleries Queensland and Australian Museums and Galleries Association (Queensland), M&G QLD held an online discussion on 29 October 2020 with museum and gallery staff and volunteers focussing on re-engaging volunteers.

Led by Leisha Walker, M&G QLD's Training & Professional Development Program Officer, this session was designed for industry colleagues to discuss ways to support volunteers in museums and galleries. The discussion included sharing ways to keep in touch with volunteers, and safe processes and protocols for volunteers wishing to return to museums and galleries.

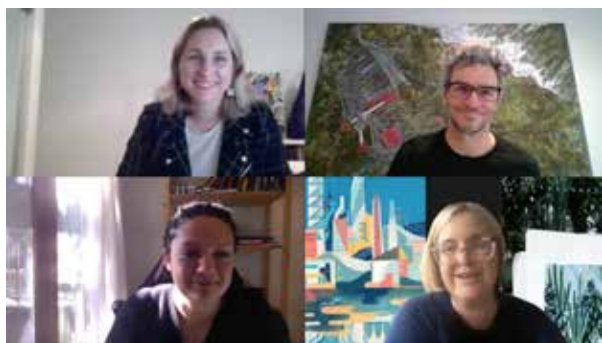
Twenty-nine people attended this session, and the discussion was not recorded.

❖ M&G QLD | UQAM Annual Event Audience Recovery Webinar Series

Each week in July 2020, M&G QLD, in partnership with The University of Queensland Art Museum and UQ Museum Studies Program, presented a series of webinars on the challenges that museums and galleries face in re-opening after COVID-19. Invited speakers from around the world explored different strategies and innovative approaches to audience recovery.

Marketing Strategies

On Thursday 9 July 2020, Natasha Henry, Head of Marketing and Communications, Art Gallery



Speakers participating in the Marketing Strategies webinar: (Top L-R) Elizabeth Gehde, Michael Brennan; (Bottom L-R) Natasha Henry, Caroline Wilson-Barnao.

of New South Wales; Elizabeth Gehde, Head of Marketing and Media Relations, Queensland Museum Network; and Michael Brennan, Director, Noosa Regional Gallery, QLD, shared the marketing strategies that they implemented to build their museum/gallery profile and reach their audiences. Dr Caroline Wilson-Barnao, Lecturer, School of Communication and Art, The University of Queensland, moderated the discussion.

Highlights from the session:

- Art Gallery of New South Wales developed *Together in Art* in 2020, as an online platform to connect people and art while the gallery was closed. It has content from artists, educators, performers and artworkers.
- Queensland Museum took the opportunity to highlight the valuable work that happens behind-the-scenes at the museum while they were closed. Regular content and videos were shared online, showcasing collection items and processes from a variety of museum staff, and they continue to do this.
- Noosa Regional Gallery adapted their in-person programs to online. This included developing an online school holiday program of activities by engaging tutors to modify their classes for online delivery; sharing films of local artists making art; altering the annual drawing prize to be an exclusively online exhibition with no entry fees.

Presenters offered the following insights:

- Regular communication with your audience is key. Whether it be via email or social media, stay in touch with your community to let them know what you're up to while the doors are closed. This also includes your volunteers, staff and stakeholders.
- Utilise the skills of your staff and volunteers. For example, if there is an enthusiastic photographer or videographer, get them involved in museum/gallery tours.
- Looking back, is there anything you would do differently? – Have a long closure risk management plan in place; and plan the marketing simultaneously with programs.

Sixty-four people attended the webinar with 96% rating it as 'Excellent' or 'Good'. 25% of the audience were new participants.

This session was recorded and is available on M&G QLD's website at www.magsq.com.au/cms/page.asp?ID=10615

The recording has been viewed 59 times and had 513 impressions between 9 July and 31 December 2020.

Community Engagement

On Thursday 16 July 2020, Crystal Stubbs, Director, East Gippsland Art Gallery, VIC; Claudia Little, Venue Supervisor, Redcliffe Museum, QLD; and Bethany MacRae, Historical and Cultural Services Coordinator, Hurstville Museum and Gallery, NSW, shared the projects that have been developed to connect with and support their communities. Tracey Heathwood, Artspace Mackay Director, Mackay Regional Council, QLD, moderated the discussion.

Key points from the session:

- East Gippsland Art Gallery received support from Gandel Philanthropy to develop an arts therapy program to support their community's wellbeing following the 2019–2020 bushfires. *Regenerate | Restart | Renew – Arts based healing after the bushfire disaster* is a safe space for participants to discuss how art can help them work through negative thoughts and focus on healing.
- While the Redcliffe Museum was undergoing major refurbishments, the staff invited long-term residents to gather in a community space and bring an object to discuss. *Precious Memories* was an opportunity for the sharing of stories and reminiscing. Unexpected connections were made as people realised their links to each other.
- Upon reopening in 2020, Hurstville Museum and Gallery 'grew' an exhibition in the gallery space, which started the slogan 'slow release explosion of creativity'. Artists were invited to be in the gallery for a week at a time and were commissioned to develop an artwork in their allocated space. It gave a platform to



Speakers participating in the Community Engagement webinar: (Top L-R) Crystal Stubbs, Tracey Heathwood; (Bottom L-R) Bethany MacRae, Claudia Little.

emerging and established local artists side-by-side in the space. Some of the process was live-streamed so people could watch the work taking shape. Locals could visit and meet the artists in timed slots.

Presenters offered the following insights:

- Be mindful of your volunteers, casual staff and regular visitors. Communication is key and it's important to stay connected for their mental health while they're not in the museum/gallery.
- There doesn't need to be an outcome. Some programs with your community can be just focussed on sharing and healing. If there are some skills shared in this process, that's a bonus.
- Create programs from the heart.
- Looking back, is there anything you would do differently? – Increased communication and consider alternate ways to maintain connections.
- Take advantage of opportunities and take chances – it's okay to make mistakes and learn from them.

Forty-two people attended the webinar with 100% of attendees rating it as 'Excellent' or 'Good'.

This session was recorded and is available on M&G QLD's website at www.magsq.com.au/cms/page.asp?ID=10615

The recording has been viewed 36 times and had 470 impressions between 16 July and 31 December 2020.



Speakers participating in the *Visitor Re-engagement* webinar: (Top L-R) **Sarah Maltby, Leisha Walker;** (Bottom L-R) **Jenny Harper, Eve Haddow.**

Visitor Re-engagement

On Thursday 23 July 2020, Jenny Harper, former Director, Christchurch Art Gallery, New Zealand; and Sarah Maltby, Director of Attractions, York Archaeological Trust | The JORVIK Group, UK, shared the strategies, processes and planning involved in welcoming back visitors to their institutions after being closed for a long period following natural disasters and redevelopment. Eve Haddow, Program Director and Lecturer, Museum Studies, The University of Queensland and Leisha Walker, Training & Professional Development Program Officer, M&G QLD, moderated the discussion.

Key points from the session:

- Following devastating earthquakes in New Zealand in 2010 and 2011, the Christchurch Art Gallery was taken over as office space for city workers. In response, they became a gallery without walls and staff arranged other buildings and outer spaces to display artworks. 'We're here because art really matters' was a motto that led them during this time. New works were commissioned, and five were acquired into the collection to represent the five years they were closed for refurbishments.
- Jorvik Viking Centre was inundated with water in 2015 and, as a result, was closed for sixteen months for repairs. They received many offers of help and partnerships on social media. They took the opportunity to keep the collection on view, and developed three new exhibitions to be displayed throughout the city in other buildings, such as the York Minster. This kept Jorvik alive in everybody's minds.

Presenters offered the following insights:

- It's important to think of your local audience and communicate with them at all times; to think of your staff and make sure they're okay at home as well as at work; to remember your bigger purpose and achieve it as well as you can in the circumstances.
- Think outside the box – utilise unusual spaces to reach your audience.
- Adapting as you go is key to recovery. Think about what is possible, rather than dwelling on what is not.

Forty-nine people attended the webinar with 93% of attendees rating it as 'Excellent' or 'Good'. 23% of the audience were new participants.

This session was recorded and is available on M&G QLD's website at www.magsq.com.au/cms/page.asp?ID=10615

The recording has been viewed 18 times and had 417 impressions between 23 July and 31 December 2020.

Visitor Intentions

On Thursday 30 July 2020, Colleen Dilenschneider, Chief Market Engagement Officer, IMPACTS Research & Development, USA; and Tandi Palmer Williams, Managing Director, Patternmakers, NSW, talked through findings from their latest research on the intentions of visitors to return to cultural institutions. Kate O'Hara, Director, Umbrella Studio Contemporary Arts, QLD, moderated the discussion.



Speakers participating in the *Visitor Intentions* webinar: (Top L-R) **Tandi Palmer Williams, Kate O'Hara;** (Bottom) **Colleen Dilenschneider.**

Key points from the session:

- IMPACTS Research & Development regularly surveys audiences of cultural organisations and has been publishing results online. This presentation was focused on factors influencing people's intentions to visit cultural entities. View the most recent data at: www.colleendilen.com
- Patternmakers has been conducting research throughout the year with audiences of cultural organisations. The results have been published as the 'Audience Outlook Monitor' and the data is available to be interrogated through the online dashboard. This presentation focused on phase 2 of the data collected in July 2020. See the most recent phase of research from the 'Audience Outlook Monitor' at www.thepatternmakers.com.au/covid19

Presenters offered the following insights:

- Communicate early and often. Visitors have expressed their appreciation that museums and galleries are providing advanced notice of their safety measures, such as booking procedures, limits on numbers, directional signage and if the museum/gallery store and café were open.
- Museums are trusted entities. The perception is that museums have the community's best interests at heart. From the research, visitors are happy that museums and galleries are enforcing the government guidelines.
- Safety is key – signage, hand sanitiser, social distancing and informed staff all reinforce feelings of safety and confidence in re-attending.
- Continue to remind your audiences that visiting your museum/gallery is a fun thing to do and that you miss them too.

Forty-eight people attended the webinar with 95% of attendees rating it as 'Excellent' or 'Good', and 100% stating they learnt something interesting.

This session was recorded and is available on M&G QLD's website at www.magsq.com.au/cms/page.asp?ID=10615

The recording has been viewed 42 times and had 609 impressions between 30 July and 31 December 2020.

Supported by the Visual Arts and Craft Strategy, an initiative of the Australian, State and Territory governments.

❖ Skill Development Workshop Series Central Queensland

With the support of a Community Heritage Grant, M&G QLD presented three skill development workshops in Central Queensland in 2020 that were free for participants to attend.

Collection Management

On 6 September 2020, a Collection Management Workshop was delivered by Lisa Jones, Museum Curator and Consultant, at Banana Shire Regional Art Gallery in Biloela.

The session provided an overview of collection management principles, including:

- Museum policies;
- Collection management paperwork;
- Cataloguing materials;
- Storage systems;
- Collection management systems;
- Object handling;
- Object numbering systems.

Over the course of the day, participants had the opportunity to not only learn about fundamental concepts of collection management, but to share experiences and discuss potential solutions and improvements to their practice.

There were thirteen participants at this workshop. Evaluation questionnaires show that 90% of attendees rated the workshop as 'Excellent' or 'Good' and 80% had not previously attended a workshop about collection management.

Participants reported the following in answer to the question, 'What will you take away from the workshop / what did you learn personally?':



Lisa Jones presenting at the Collection Management workshop in Biloela.

'Policies and mission statement. Catalogue management and implementation.'

'How to catalogue our collection, how to accept or refuse gifts to the museum, how to create mission statement and policies.'

'I was able to bring a problem to solve re our music collection and gain valuable ways forward. Learn up-to-date industry skills, networking. From the workshop I can produce activities for volunteers wanting to help with the collection and innovative ways to promote our museum/gallery.'

Preventive Conservation and Disaster Preparedness

On 7 September 2020, a Preventive Conservation and Disaster Preparedness Workshop with Christine Ianna, Conservator and Museum Consultant, was held at Rockhampton Art Gallery.

This workshop provided participants with a general overview of preventive conservation principles that underpin the use and preservation of cultural collections, including:

- Key elements and terminology of collection preservation;
- Factors contributing to deterioration of collections;
- Identifying symptoms and recognising causes of damage/deterioration;
- Controlling and preventing damage and deterioration factors;
- Recommended display, storage and handling guidelines and materials;



Christine Ianna presenting at the Preventive Conservation and Disaster Preparedness workshop in Rockhampton.

- Condition reporting and digitisation;
- Introduction to risk management and disaster preparedness planning.

Twenty-four participants attended from Rockhampton and the surrounding regions. Evaluation questionnaires show that 100% of attendees said they learnt new information. Respondents reported the following in answer to the question, 'What will you take away from the workshop / what did you learn personally?':

'Good to know what should go into a disaster plan/bin. Very practical methods of keeping collections in good condition. Personally – use of mylar for my own documents/photos. Interesting as to whether gloves are needed to handle certain objects. Fingerprints on photographs. 'Off gassing'.'

'I picked up a lot of useful points. I was reminded of the importance of sharing risk assessments/plans with all volunteers.'

'Go and do/complete conservation reports on three significant objects that we have conserved.'

Significance Assessment

On 24 October 2020, M&G QLD ran the final workshop in this series, Significance Assessment, with Dr Melanie Piddocke, Museum Development Officer – Central Queensland, Queensland Museum Network, at Gladstone Regional Art Gallery & Museum.



Melanie Piddocke presenting at the Significance Assessment workshop in Gladstone.

In this workshop, Dr Melanie Piddocke shared with participants how 'significance' is used to define the meanings and value of collection items through research and analysis. Topics covered included:

- An introduction to Significance 2.0;
- Significance criteria and how to use them to assess an object or collection;
- Using significance to manage collections;
- What to expect from a significance assessment.

On the day, participants put their learnings into practice and undertook a significance exercise using an object (with associated documentation) from their own collection.

Thirteen participants attended this workshop. Evaluation questionnaires show that 100% said they learnt new information and they felt able to put what they learnt into practice. Respondents to the evaluation questionnaires reported the following in answer to the question, 'What will you take away from the workshop / what did you learn personally?':

'I learnt that because an item is old does not automatically make it significant. There are many considerations to determine an item's significance.'

'I like that we brought an example from our museum to work on with the instructor and received immediate feedback.'

'All details about significance and being able to practically use skills. Assistance for significance assessments. Networking with other galleries and those in industry.'

Can see where to proceed at museum and gallery with collection.'

The Community Heritage Grants program is funded by the Australian Government through the National Library of Australia; the Ministry for the Arts; the National Archives of Australia; the National Film and Sound Archive; and the National Museum of Australia.

❖ 2020 Small Museums Conference



The 2020 Small Museums Conference was organised by Historic Ormiston House in Redlands Coast. It was held from Friday 15 October to Sunday 18 October, with a pre-conference seminar on Thursday 14 October, along with additional activities throughout the event. The theme was *Environment, Heritage, Sustainability*.

There were approximately 70 people in attendance from across Queensland, which led to great opportunities for networking and discussions. M&G QLD Training and Professional Development Program Officer, Leisha Walker, attended and presented at the Conference.



Historic Ormiston House.

Exhibition Development and Touring

9 exhibitions were toured by M&G QLD in 2020 to 30 venues nationally, featuring 142 artists and 14 curators, showing for a total of 969 exhibition days and attracting 86,506 visitors.

❖ **Artistic Endeavour: Contemporary botanical artists' response to the legacy of Banks, Solander and Parkinson**

M&G QLD partnered with Botanical Artists' Society of Queensland (BASQ) during 2019/2020 to develop this exhibition for touring. The exhibition opened at its first tour venue, Redland Art Gallery, in December 2020.

The year 2020 marks the 250th anniversary of the *Endeavour* voyage along the east coast of Australia by Joseph Banks and Daniel Solander, together with illustrator Sydney Parkinson. Of the 30,000 specimens of flora and fauna collected on this 'Voyage of Discovery', most were new to European science and became the 'type' that described the species.

The Botanical Artists' Society of Queensland has developed an exhibition that considers the significance to Queensland of the botanical specimens collected and the emergence of Botanical Art in science. Drawing from historical sources and specimens held at the Queensland Herbarium, some of which were collected in 1770, along with living plants, the artists have created plant portraits that highlight the significance of Queensland's botanical heritage.

Scientific illustration, watercolour, scraperboard, historical media such as silverpoint and watercolour on vellum, and contemporary practice are included in the exhibition.

Co-Curated by Beth Jackson and Dr Nita C Lester, this exhibition brings a contemporary perspective to the historic *Endeavour* voyage and forms part of a world-wide program of commemorations.



Anne Hayes, *Banksia serrata*, old man banksia, gabiirr (Guugu Yimithirr), 2017. Watercolour on paper, 63 x 45 cm. Courtesy of the artist.

Artistic Endeavour is touring nationally from 2020–2022.

The BASQ exhibition project team is being mentored as part of M&G QLD's Artist Touring Mentorship Program, an initiative supported by M&G QLD's Visual Arts and Craft Strategy (VACS) funding.

Artistic Endeavour is an initiative of the Botanical Artists' Society of Queensland in partnership with Museums & Galleries Queensland. This project has been assisted by the Australian Government's Visions of Australia program; the Queensland Government through the Visual Arts and Craft Strategy, an initiative of the Australian, state and territory governments; and the Regional Arts Development Fund, a partnership between the Queensland Government and Moreton Bay Regional Council to support local arts and culture in regional Queensland. Proudly supported by Moreton Bay Regional Council and sponsored by IAS Fine Art Logistics and Winsor & Newton.



Ross Manning, *Dichroic Filter Piece (extended projection)*, 2012–2017. Dichroic filters, cut glass, media players, and data projectors. Photography: Tony Nathan. Image courtesy Perth Institute of Contemporary Arts.

❖ ***Dissonant Rhythms* – Ross Manning**

This exhibition of works by Brisbane-based artist Ross Manning completed its three-year tour in November 2020.

Ross has been creating immersive light and sound works for around a decade. His work is grounded in the artistic and music traditions of Brisbane, while his increasingly ambitious sonic and luminous environments has put him at the forefront of artistic practice nationally and internationally.

Ross Manning's first-ever survey exhibition, *Dissonant Rhythms*, produced by the Institute of Modern Art (IMA), brought together works created over the previous eight years that immerse audiences in mesmerising encounters with light, movement and sound, scored by carefully manipulated or constructed technologies, and which push the boundaries between artwork and gallery, exhibition and performance.

Co-Curated by Aileen Burns, Johan Lundh and Madeleine King, the touring show included works from three key strategies that recur in Ross's *oeuvre*: light mobiles, self-playing instruments, and hacked technology.

The catalogue, documenting the artist's career and the exhibition, contains essays by leading art historians and scholars of experimental music and sound art. It explores Ross's practice in depth and gives the work a national and global context.

In 2020, *Dissonant Rhythms* toured to four venues nationally: Latrobe Regional Gallery, VIC; Bank Art Museum Moree, NSW; Lismore Regional Gallery, NSW; concluding its tour at Western Plains Cultural Centre, Dubbo, NSW.

Artist Ross Manning delivered an artist talk and demonstration at Moree. Unable to travel to Lismore Regional Gallery due to COVID travel restrictions, Ross delivered an online artist talk.

Due to COVID-19, Western Plains Cultural Centre was unable to deliver public programs during the exhibition period.

40,949 visitors viewed *Dissonant Rhythms* during its tour to nine venues nationally from 2018–2020.

❖ ***Legacy: Reflections on Mabo***

Legacy: Reflections on Mabo celebrates the man behind the game-changing Native Title Act, Eddie Koiki Mabo.

Co-Curated by Gail Mabo (daughter of Eddie Koiki Mabo), Dr Jonathan McBurnie (former Director of Umbrella Studio Contemporary Arts) and Kellie Williams (former Director of Umbrella Studio Contemporary Arts), the exhibition brings together a selection of 22 works by Indigenous and non-Indigenous artists in the spirit of reconciliation, approximately three decades after the historic achievement.



David Jones, *Mabo Confronts Leviathan*, 2019. From *Legacy: Reflections on Mabo*. Etching print on rag paper. 93.5 x 76.5 cm. Photo: Carl Warner.

Each artist has responded to an aspect of Eddie Mabo that they are drawn to, whether it is his life, politics, activism, or legacy. The works come together in surprising ways with reverence, compassion, anger, sadness and respect, celebrating a man who was both a rebel and a dreamer.

In 2020, *Legacy: Reflections on Mabo* toured to three venues nationally: Maitland Regional Art Gallery, NSW; Hawkesbury Regional Gallery, NSW; and Burrinja, Dandenong Ranges Cultural Centre, VIC. Two other venues were cancelled due to COVID-19.

Co-Curator, Gail Mabo, participated in public programs and networking at Hawkesbury Regional Gallery and sat for a portrait by a local artist.

In December 2020, while the exhibition was on display at Burrinja in the Dandenong Ranges, a 'Watch Party' was delivered, involving a live-screened journey with Gail Mabo to Mer Island as she shared memories of her father and stories of

their Country. This continued with a discussion of Eddie Koiki Mabo's work while walking through the campus at James Cook University and meeting some of the artists involved in the exhibition. Gail Mabo and Dr Jonathan McBurnie then answered questions live.

Artists: Blak Douglas & Adam Geczy, Elisa Jane Carmichael & Sonja Carmichael, Toby Cedar, Dian Darmansjah, Katina Davidson, Shane Fitzgerald, Hayley Megan French, Marion Gaemers, Patricia HOFFIE, David Jones, Ian Kaddy, Talitha Kennedy, Jo Lankester, Veronica Lulu & Kim Mahood, Ron McBurnie, Arone Meeks, Jim Paterson, Tommy Pau, Obery Sambo, Anneke Silver, Ken Thaiday Snr, Judy Watson.

Legacy: Reflections on Mabo is a travelling exhibition presented by Umbrella Studio Contemporary Arts and toured by Museums & Galleries Queensland. It has been generously assisted by the Australian Government's Visions of Australia Program and the Visual Arts and Craft Strategy, an initiative of the Australian, State and Territory Governments. It is supported by the Queensland Government through Arts Queensland and the Australian Government through the Australia Council for the Arts, its arts funding and advisory body.

❖ ***Manggan – gather, gathers, gathering***

Manggan – gather, gathers, gathering is an exhibition of cultural works from the Girringun Aboriginal Art Centre in Cardwell in far north Queensland and from the South Australian Museum. The Corporation encompasses nine tribal groups in far north Queensland: the Nywaigi, Gugu Badhun, Warrgamay, Warungnu, Bandjin, Girramay, Gulnay, Jirrbal and Djiru people.

Emerging from the rainforest canopy and a culture spanning countless generations, the work of Girringun artists is attracting a lot of attention. Contemporary Indigenous weavers, painters, potters, textile artists and makers of traditional objects are transforming their stories and environments of this ancient culture into visual images and designs. A continuing close connection to place and honouring of Indigenous law and culture provides inspiration



Installation view of *Manggan – gather, gathers, gathering* at Museum of Art and Culture Lake Macquarie, NSW. Photo courtesy of the Museum.

for their work, which embraces traditional and contemporary concepts. The Girringun artists are renowned weavers of traditional forms and they also use a fresh approach when working with the ceramic medium.

This exhibition includes recent artworks featuring documentaries, pictures, weaving (bicorncul baskets called Jawun and modern baskets), ceramic (fire spirits called Bagu) by Indigenous artists from the Girringun Aboriginal Art Centre. These contemporary artworks are displayed alongside baskets selected from the collection of the South Australian Museum in Adelaide.

Co-Curators: Dr Valerie Keenan, Dr Valerie Boll.
Artists: Daniel Beeron, George Beeron Snr, Maureen Beeron, Theresa Beeron, Nancy Cowan, Nephi Denham, Sandra Escott, Tonya Grant, Judith Henry, Clarence Kinjun, Doris Kinjun, Abe Muriata, Alison Murray, Debra Murray, Emily Murray, John Murray, Ninney Murray, Sally Murray, Eileen Tep.

In 2020, the exhibition toured to five galleries nationally: Bunjilaka, Melbourne Museum, VIC; Port Pirie Regional Art Gallery, SA; Nautilus Arts Centre, Port Lincoln, SA; Museum of Art and Culture Lake Macquarie, NSW; and Caboolture Regional Gallery, QLD.

Girringun artists, Claude Beeron, Doris Kinjun, and Nephi Denham, together with Co-Curator Valerie Boll, participated in a range of public programs and networking events at Bunjilaka, Melbourne Museum. 182,669 visitors viewed the exhibition at this venue from August 2019 to January 2020.

Port Pirie Regional Art Gallery held a number of education, volunteer and cultural awareness professional development activities during the exhibition period. Three planned public programs had to be cancelled due to COVID-19.

COVID also prevented Girringun artists and curators from travelling to Port Lincoln, Lake Macquarie and Caboolture. Nautilus Arts Centre hosted visits from numerous local primary schools, as well as an excursion by Aboriginal students from Whyalla. Lake Macquarie delivered educational and practical workshops throughout the exhibition period.

Manggan – gather, gathers, gathering is a travelling exhibition in partnership between Girringun Aboriginal Art Centre, the South Australian Museum, and toured by Museums & Galleries Queensland. This exhibition is supported by the Visions regional touring program, an Australian Government program aiming to improve access to cultural material for all Australians. It

is supported through the Australian Government's Indigenous Visual Arts Industry Support program and the Queensland Government; and proudly sponsored by Conrad Gargett, Urban Art Projects and TED.

❖ ***Reasonable & Necessary: prints and artist books by Artel Artists***

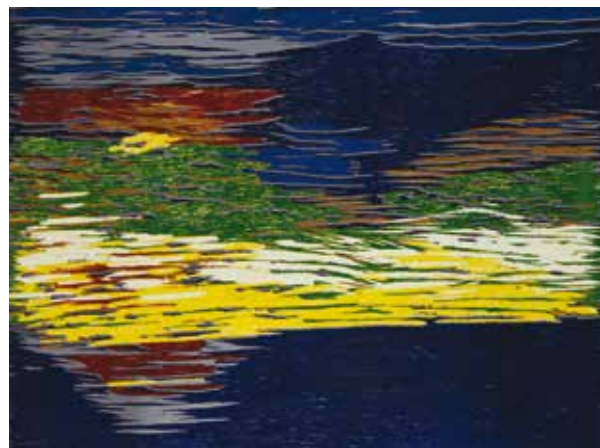
Artel, CPL – Choice, Passion, Life's creative industries studio in Redcliffe, QLD, supports the development of a positive and participatory cultural identity for a group of around 40 artists with profound and complex disabilities. The studio offers space, instruction and an environment in which this particular community of individuals has been able, over many years, to express themselves as a dynamic artistic movement.

M&G QLD's exhibition, *Reasonable & Necessary: prints and artist books by Artel Artists*, curated by Lynne Seear, includes prints and artist books which are both refreshingly unpretentious and exceedingly skilled. The Artel artists present a range of artworks in familiar genres – portraits, landscapes, still-life, abstracts – using a visual language that is contemporary, distinctive and undeniably their own.

Reasonable & Necessary includes framed prints; artist books; a collection of artists' adapted tools; and a documentary film by Redcliffe filmmaker, Jeremy Ruckels, providing significant insight into the intricacies and challenging work involved (both from artist and technician) in facilitating high levels of autonomous, participant directed artwork, and insight into individual artists' lives and how Artel has changed or influenced them.

In 2020, the exhibition toured to five Queensland venues: Artspace Mackay; Emerald Art Gallery; Mundubbera Regional Art Gallery; Redland Art Gallery; and Warwick Art Gallery. Another venue had to be rescheduled to 2021 due to COVID.

Artel's Visual Art Coordinator, Louise Taylor, delivered a floor talk and workshop in Emerald. Public programs were not able to be delivered in Mundubbera and Redland. Instead, Redland produced a short walk-through promotional video.



Daniel Swart, *Pelican Park, Clontarf*, 2016. From *Reasonable & Necessary: prints and artist books by Artel Artists*. Reduction relief print, 300 x 405 mm. Courtesy of the artist and Artel. Photo: Vanessa Xerri.

The exhibition continues touring until the end of 2021.

Artel artists and coordinators are being mentored as a part of M&G QLD's Artist Touring Mentorship Program, an initiative supported by M&G QLD's Visual Arts and Craft Strategy (VACS) funding.

Reasonable & Necessary: prints and artist books by Artel Artists is an initiative of Museums & Galleries Queensland in partnership with CPL and curated by Lynne Seear. This project has been supported by the Queensland Government through Arts Queensland; the Visual Arts and Craft Strategy, an initiative of the Australian, State and Territory governments; and the Australian Government through the Australia Council, its arts funding and advisory body. The project is proudly sponsored by Hutchinson Builders and Moreton Bay Regional Council.

❖ ***Safe Space contemporary sculpture***

M&G QLD's major touring initiative, *Safe Space*, is an exhibition of contemporary Australian sculpture, curated by Christine Morrow.

Developed in partnership with Logan Art Gallery, the exhibition brings together works that explore the physical and psychological dimension of space, and showcases the works of twelve acclaimed Australian artists.



Safe Space installed at Devonport Regional Gallery, TAS. Photo courtesy of the Gallery.

Artists: Abdul-Rahman Abdullah, David Cross, Keg de Souza, Karla Dickens, Franz Ehmann, Will French, Claire Healy & Sean Cordeiro, Rosie Miller, Michelle Nikou, Alex Seton and Tim Sterling.

Many of the works in this exhibition have social, and sometimes political resonances and take as their point of departure: the human body, its dimensions, the spaces it occupies, the narratives that contain it and the theatre or spectacle that unfolds around it.

Four maquettes commissioned from exhibition artists, Abdul-Rahman Abdullah, Claire Healy & Sean Cordeiro, Michelle Nikou and Tim Sterling are also travelling with the exhibition. This enables gallery staff to deliver supervised hands-on experiences when presenting education and public programs; to augment discussions about the artist's practice; and to assist in illustrating the core foundations of sculpture – carving, casting, modelling and assemblage.

The exhibition support material includes a film of a panel discussion with Curator, Christine Morrow, and eight of the exhibition artists, recorded at Logan Art Gallery by Carl Warner and David Thomas. Due to COVID-19 precautions in 2020, the film was made accessible from M&G QLD's website via a QR code displayed at the venues, instead of being accessed on iPads travelling with the exhibition.

Safe Space has its own dedicated website (safespacesculpture.com), which contains information on the exhibition artists, tour itinerary, education resource, the panel discussion video and artist videos.

A full-colour exhibition catalogue is provided at no cost to tour venues to distribute to visitors. The catalogue was shortlisted for the 2020 Museums Australasia Multimedia and Publication Design Awards (MAPDA).

In 2020, *Safe Space* toured to four venues: Toowoomba Regional Art Gallery, QLD; Maitland Regional Art Gallery, NSW; Devonport Regional Gallery, TAS; and Swan Hill Regional Art Gallery, VIC.

M&G QLD Exhibition Program Officer, Andrea Higgins, had previously been travelling to each of the venues to assist with installation of these complex works, but was unable to do so for Maitland, Devonport and Swan Hill due to COVID. Instead, extensive phone and email support was provided during installation periods.

In Toowoomba, exhibition artist Keg de Souza delivered two *Star Story* workshops for children in January 2020.

In Maitland, exhibition artist Alex Seton travelled to the gallery to assist with installation of

his artwork, providing a valuable professional development opportunity for gallery staff. Alex also delivered an artist's talk with local senior school students.

Devonport Regional Gallery did not deliver any public programs or events related to the exhibition due to COVID.

The exhibition is touring nationally until 2022.

Safe Space is an initiative of Museums & Galleries Queensland developed in partnership with Logan City Council through Logan Art Gallery, and curated by Christine Morrow. This travelling exhibition is supported by the Visions regional touring program, an Australian Government program aiming to improve access to cultural material for all Australians; the Queensland Government through Arts Queensland; the Visual Arts and Craft Strategy, an initiative of the Australian, State and Territory governments; and is assisted by the Australian Government through the Australia Council, its arts funding and advisory body.

❖ ***Some people are stories* – Vincent Serico**

Artist Vincent Serico was born in Brisbane before being separated from his family at the age of four and sent to the mission at Cherbourg, Queensland. His mother was a Palm Island woman and his father was from Carnarvon.

Vincent's stories are about living in different parts of Queensland, working, travelling, painting, and playing cards in old mission communities like Cherbourg, Palm Island, Mornington Island, Yarrabah, and Doomadgee.

Vincent's art aims to acknowledge Aboriginal existence in a way that gives comfort, while recognising past pain, sorrow, longing and loss, and leaving a trace of them in the hearts of others. The artist's central attribute is to make the art 'sing' in a positive, winning stroke rather than creating a resigned memorial.

In collaboration with FireWorks Gallery, Vincent created a limited edition folio, *Some people are stories*. Launched in 2009, it comprises 20



***Some people are stories* installed at Bribie Island Community Arts Centre, QLD. Photo courtesy of the Centre.**

vivid and colourful images, digitally printed with archival inks onto 300gsm Hahnemuehle rag paper, and includes a number of stories, interview notes and quotes by Vincent, collected between 1993 and 2007.

Curated by Michael Eather, the touring exhibition, *Some people are stories*, includes the limited edition, bound folio; 20 framed print reproductions featured in the folio; accompanied by nine original paintings. This is the first major touring exhibition of Vincent Serico's work since his death in 2008.

The exhibition is accompanied by a film commissioned by M&G QLD, recording a conversation between Michael Eather and Professor Marcia Langton AM on the work of Vincent Serico. Due to COVID-19 precautions in 2020, the film was made accessible from M&G QLD's website via a QR code displayed at the venues, instead of being accessed on iPads travelling with the exhibition.

Some people are stories toured to three Queensland venues in 2020: Pine Rivers Art Gallery, Strathpine; Matthew Flinders Gallery, Bribie Island Community Arts Centre; and Wondai Regional Art Gallery. At Bribie Island, the exhibition was on display for a very short period due to COVID closures, and Wondai had to delay their display period until easing of restrictions were in place.

Curator, Michael Eather, travelled to Bribie Island to attend the opening event and deliver a Curator's talk in March 2020.

Wondai was a significant venue in the tour itinerary due to the Gallery's proximity to Cherbourg where Vincent had spent much of his youth. Elders from the Cherbourg community attended and spoke at the launch of the exhibition in July 2020. A second opening event was held later in July to engage supporters that could not attend the launch event due to COVID social distancing requirements. Curator, Michael Eather, travelled to Wondai to deliver a Curator's talk in August 2020 and to deliver a talk to 50 local primary school students.

The exhibition concluded its tour at Wondai at the end of August 2020. The exhibition was viewed by 18,948 visitors at nine venues from 2018–2020.

Some people are stories is a touring exhibition in partnership between FireWorks Gallery and Museums & Galleries Queensland. This project is supported by the Queensland Government through Arts Queensland. This project has also been assisted by the Australian Government through the Australia Council for the Arts, its arts funding and advisory body, and supported by the Visual Arts and Craft Strategy, an initiative of the Australian Federal, State, and Territory Governments.

❖ **USE**

M&G QLD partnered with the Jewellers and Metalsmiths Group of Australia, Queensland Chapter (JMGQ), to develop the *USE* exhibition for touring. *USE* is curated by Lisa Bryan-Brown and features 17 contemporary jewellers and small object makers.

This JMGQ showcase exhibition is thematically focused on the concept of tools, while exploring the conceptual breadth and layers of meaning that operate within the theme for contemporary jewellers, metalsmiths and small objects practitioners.

Essential to any artisan's practice, tools provide an interesting and reflexive conceptual point of entry



***USE* on display at New England Regional Art Museum, NSW. The cabinet features works by exhibition artist, Katie Stormonth, with an artwork from the Museum's collection on the wall behind. Photo courtesy of the Museum.**

into contemporary jewellery and small object practices. The artists respond to concepts such as: What does it mean to work in a bespoke, hand-made way in the face of the widespread uptake of modern technologies? What is the place of these new technologies for the modern jeweller? With the increase of cheaply available mass-manufactured jewellery, what is the role of hand-crafted contemporary jewellery in design? How does a jeweller's relationship to their tools, whatever they may be, influence the works they create?

Artists: Helen Bird, Jac Dyson, Lois Hayes, Catherine Hunter, Alicia Lane, Catherine Large, Samuel Lintern, Andy Lowrie, Nellie Peoples, Clare Poppi, Kierra-Jay Power, Paola Raggo, Elizabeth Shaw, Katie Stormonth, Rebecca Ward, Helen Wyatt, Xiaohui Yang.

Filmmakers Carl Warner and David Thomas were commissioned to record interviews with the Curator and four of the exhibition artists. The film has been captioned for hearing impaired viewers. It is available on M&G QLD's website. Due to



Installation view of **YOU ARE HERE 2 (The Incredible Lightness of Being)** by Susan Lincoln, at Warwick Art Gallery, QLD. Photo courtesy of the Gallery.

COVID-19 precautions in 2020, the film was made accessible via a QR code displayed at the venues, instead of being accessed on iPads travelling with the exhibition.

The exhibition toured to four venues in 2020: Banana Shire Regional Art Gallery, Biloela, QLD; New England Regional Art Gallery, Armidale, NSW; Hurstville Museum and Gallery, NSW; and Port Pirie Regional Art Gallery, SA.

In Biloela, exhibition artist Helen Bird delivered a Drawing Machine workshop, and Helen and Lisa Bryan-Brown, Curator, delivered a talk in January 2020.

In February 2020, exhibition artist Clare Poppi delivered an Etched Silver Pendant workshop and Curator, Lisa Bryan-Brown, delivered a talk.

In light of COVID, a range of online engagement activities were developed for Hurstville Museum & Gallery, NSW, including an online webinar with the Curator and artists, Elizabeth Shaw and Clare Poppi, as well as a video of artist Helen Bird delivering her Drawing Machine workshop.

USE is touring nationally until June 2021.

USE is a touring exhibition in partnership between Jewellers and Metalsmiths Group of Australia (Queensland Chapter) Inc. and Museums & Galleries Queensland. This project is supported by the Visions regional touring program, an Australian Government

program aiming to improve access to cultural material for all Australians; the Queensland Government through Arts Queensland; the Australian Government through the Australia Council, its arts funding and advisory body; Liveworm Studio; and the Queensland College of Art, Griffith University.

❖ **YOU ARE HERE 2 (The Incredible Lightness of Being) – Susan Lincoln**

This immersive exhibition by Queensland artist, Susan Lincoln, included installation works, works on paper, video, and large sculptural elements that explore mindfulness and relaxation and reinforce the notion of improving well-being through the arts.

The meticulously crafted, multifaceted artworks employ light, material and form to convey a secular spirituality; combining sculpture, installation and photography and acting as *Memento Vivre* (reminders to live).

The centrepiece of the exhibition, *TRR (Light Vehicle)*, is a unique, stand-alone, built environment, which upon entering immerses the participant within a sensory experience akin to time inside spectral light. This portable, clip-together space provides an ethereal meditative environment, designed to be experienced either alone or with one other. The work strives for an emotive response to be experienced and shared between the viewer and the space.

This exhibition's suite of public programs provided numerous opportunities for meditation and mindfulness activities in the gallery.

The exhibition concluded its tour in February 2020 at Warwick Art Gallery, QLD. The artist, Susan Lincoln, travelled to Warwick to deliver a range of public programs, including an artist talk; a performance event, *LISTEN*; and Recycled Timber Light Catcher workshops.

3,084 visitors viewed the exhibition at three venues from 2019–2020.

Susan was mentored as part of M&G QLD's Artist Touring Mentorship Program, an initiative supported by M&G QLD's Visual Arts and Craft Strategy (VACS) funding.

A travelling exhibition organised by Warwick Art Gallery and toured by Museums & Galleries Queensland. This project is supported by the Queensland Government through Arts Queensland; the Visual Arts and Craft Strategy, an initiative of the Australian, State and Territory governments; and the Australian Government.

Exhibitions in development 2021/2022

❖ Pattern and Print: Easton Pearson Archive

Brisbane fashion house Easton Pearson was at the avant-garde of international fashion between 1998 and 2016. The label's success hinged on the creative relationship between Pamela Easton and Lydia Pearson, whose unique ways of working fostered inventive designs, lasting collaborations, and supported ethical manufacture.

Pattern and Print: Easton Pearson Archive is a touring exhibition organised by Museum of Brisbane (MoB), to be toured by Museums & Galleries Queensland. It features a selection of Easton Pearson's most vibrant designs, highlighting the staggering variety of patterns, colours and materials the label employed.

Easton Pearson created its own textile designs, setting it apart from other Australian fashion houses. On many occasions, Easton Pearson



The Designers' Guide: Easton Pearson Archive, 2018. Photo: Carl Warner. Illustration by Stephen Mok. Donated by Dr Paul Eliadis through the Australian Government's Cultural Gifts Program, 2017. Easton Pearson Archive, Museum of Brisbane Collection.

worked with individual artists to create unique designs, from colourful Indian hand beading, bold digital prints of original artworks, or designs painted by hand directly onto a finished dress.

Pattern and Print: Easton Pearson Archive highlights Easton Pearson's collaborative approach, with a custom mural by Brisbane-based painter, illustrator and long-time Easton Pearson collaborator, Stephen Mok. Stephen created window designs for the label's flagship store, hand-painted patterns onto garments, and decorated accessories and props for the runway. His playful aesthetic presents the fantastical world of Easton Pearson, where both simplicity and detail shine, and artistry triumphs.

The exhibition will tour nationally to six venues from 2021–2022.

This project has been assisted by the Australian Government's Visions of Australia program.



ZOONOSES (detail)
installed at Caboolture
Regional Art Gallery, QLD.

The Easton Pearson Archive gift to Museum of Brisbane has been made possible by the generous support of Dr Paul Eliadis, a Brisbane-based philanthropist and patron of contemporary art and design. The Archive consists of more than 3,300 garments donated by Dr Eliadis through the Australian Government's Cultural Gifts Program, 2017. It is supported by more than 5,000 accessories, specification sheets, range plans, look books, photographs and other supporting material donated by Pamela Easton and Lydia Pearson, 2018.

❖ **ZOONOSES – Nicola Hooper**

Through drawing and lithography, Nicola Hooper uses fairy-tale iconology and rhymes to explore concepts surrounding zoonoses (animal diseases that can infect humans). The exhibition *ZOONOSES* explores how we perceive certain animals in the context of fear and disease.

Nicola is a Logan-based artist with a background in design and illustration. Lithography and drawing became integral to her studio practice whilst she completed her studies.

ZOONOSES includes artworks created during a studio stay at Black Church Print Studio in Dublin, Ireland, while Nicola researched the Celtic myth 'Concerning Cats' by Lady Francesca Wilde in her book *Ancient Legends, Mystic Charms, and Superstitions of Ireland 1887*. Nicola re-tells this story, making associations to the zoonosis 'Toxoplasmosis'. The works are all created using hand-coloured stone lithography including artist books, prints, wallpaper and mobiles.

❖ **long water: fibre stories**

M&G QLD is working with the Institute of Modern Art, Brisbane, to prepare this exhibition for tour to commence in 2021.

Curated by Freja Carmichael, *long water: fibre stories* illuminates spiritual, ancestral, and physical connections to water through fibre practices of artists from Yuwaalaraay (North West NSW), Quandamooka (Moreton Bay, South East QLD), Kuku Yalanji (Far North QLD), Zenadh Kes (Torres Strait Islands, QLD), Yurruwi (Milingimbi Island, NT), and surrounding homelands. Together this group – Aboriginal and Torres Strait Islander women, spanning different generations and ancestries – share an inseparable relationship to water, be it the vast sea, inland waterways, or expansive river systems.

Collectively, *long water* celebrates the stories of regeneration and continuation of important cultural traditions, and the strong women and



Janet Fieldhouse, Hybrid Sailing Canoe Series 1, 2019.
Buff raku trachyte, white feathers, black wire, bamboo, raffia. Courtesy of Institute of Modern Art.



Jay Younger, *Kim Jong-un*, 2018. Archival inkjet print, 80 x 80 cm. Edition 8. Courtesy of the artist and Onespace Gallery.

vital water places that sustain them. The country, and wide range of environments, practices, and knowledge represented speak to both deep time and contemporary experiences – bringing into focus the importance of water to our cultural health and our capacity for resilience.

❖ ***Demagogues and Megalomaniacs – Jay Younger***

M&G QLD has been working with Onespace Gallery, Brisbane, on a proposed exhibition of photographs by senior Queensland artist, Jay Younger.

Using politicians as the subject matter, Jay interrogates the absurdity of neoliberal and despotic political leaders in the national and global arena. Her images are satirical photomontages drawn from popular culture – with George W Bush, Ronald Reagan, Margaret Thatcher, Pauline Hanson, Clive Palmer, Donald Trump and Kim Jong-un.

Jay reflects on her surprise and dismay at the unprecedented and continually unfolding political ploys.

❖ ***Dreamscapes: contemporary desert art*** [working title]

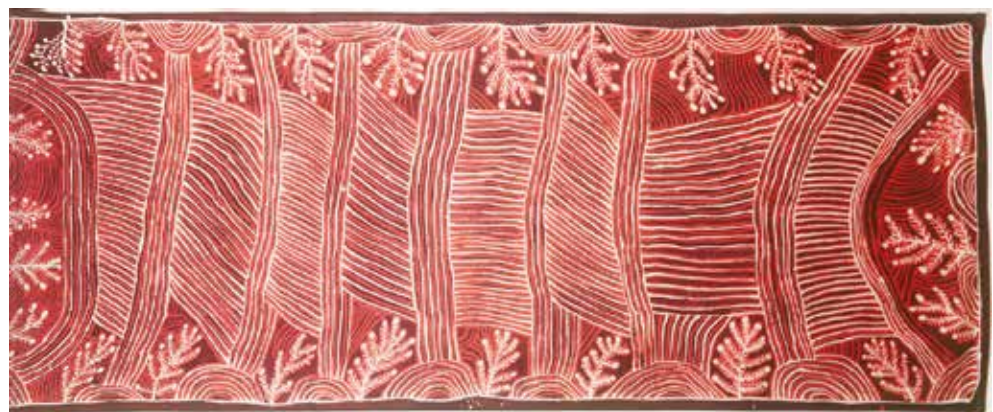
Approximately every four years, M&G QLD develops its own touring exhibition responding to sector consultation and identified gaps in available touring product.

For this exhibition, M&G QLD will partner with private collectors Andrew Arnott and Karin Schack to tour a selection of works from their remarkable private collection of Indigenous art. This collection showcases high-quality contemporary Aboriginal art spanning the first 30 years of the Western Desert art movement.

It is proposed that the exhibition will be available to tour nationally from 2022 to 2024.

This project is supported by the Visual Arts and Craft Strategy, an initiative of the Australian, State and Territory governments.

Ada Bird Petyarre,
Bush Tomato & Atnankere Country,
1997. Batik on silk,
285 x 114 cm.
Courtesy of Andrew
Arnott and Karin
Schack.



❖ Exhibition Advisory Panel

In September 2020, M&G QLD facilitated an Exhibition Advisory Panel to review exhibition proposals received in 2020. We acknowledge the panel's insightful comments and generous feedback offered throughout the session.

Two or three of these proposals will progress to the next stage to potentially enter M&G QLD's 2021–2022 Exhibition Development & Touring program.

Audio-Visual Touring Exhibition Resources

M&G QLD continued to expand its initiative to further engage audiences with M&G QLD's touring program and to profile the artists and their practice. This became particularly relevant in 2020 when galleries were closed for periods due to COVID, and artists were sometimes unable to travel to deliver public programs.



Stills from *Safe Space* artists' films by Alex Seton (top) and Abdul-Rahman Abdullah (above).

Due to COVID restrictions, we also transitioned from showing exhibition films on iPads within the gallery space to displaying QR codes in venues linked to the films on the M&G QLD website.

In 2020 M&G QLD published two films, by artists Alex Seton and Abdul-Rahman Abdullah, to further increase access and audience engagement with the Company's touring exhibition, *Safe Space contemporary sculpture*.

M&G QLD extends sincere thanks to Maitland Regional Art Gallery, NSW, for captioning these films for increased access.

Films commissioned by M&G QLD, supported by the Visual Arts and Craft Strategy, an initiative of the Australian, State and Territory Governments.

Artist Touring Mentorship Program

M&G QLD's Artist Touring Mentorship Program aims to: mentor and build the selected artists' professional knowledge and skill base to get them 'market ready', with the view to their exhibitions entering M&G QLD's touring program; to raise the artists' profiles; and to maximise community engagement with their works through the resultant touring exhibitions.

In 2020, M&G QLD finalised its mentorship of artist Susan Lincoln, supporting her in areas including: exhibition evaluation; condition reporting; exhibition dispersal procedures; how to write a tour report; how to write a grant acquittal; and how to acquit a budget.

Mentoring continued of the artists and coordinators at Artel, the CPL – Choice, Passion, Life – creative industries studio in Redcliffe. Artel supports a group of around 40 artists with profound and complex disabilities to engage in artistic practice, and advocates for the important contribution of these professional artists in wider society.

M&G QLD continued mentoring the Botanical Artists' Society of Queensland (BASQ) project team in the development of their exhibition, *Artistic Endeavour: Contemporary botanical*

artists' response to the legacy of Banks, Solander and Parkinson. This covered all areas of exhibition development in preparation for the exhibition opening at its first tour venue, Redland Art Gallery, in December 2020. Consultant, Sonja Uranishi, also mentored the project team in marketing and communications during this period.

The Artist Touring Mentorship Program is an initiative of Museums & Galleries Queensland, supported by the Visual Arts and Craft Strategy, an initiative of the Australian, State and Territory governments.

National Exhibitions Touring Support (NETS) Australia

NETS Australia consists of seven independent arts organisations from each state and territory with a unified dedication to the presentation, promotion and support of contemporary arts, craft and design to metropolitan and regional audiences across the country. The network comprises:

- Artback NT: Arts Development and Touring;
- Art on the Move WA;
- Contemporary Art Tasmania;
- Country Arts SA;
- Museums & Galleries of NSW;
- Museums & Galleries Queensland; and
- NETS Victoria.

The NETS Australia website brings together the suite of touring exhibitions managed by the NETS Australia network, interactive educational resources and video content. It also features a National Exhibition Register, an online directory of available touring exhibitions from across the country. In 2020, the website attracted 17,019 page views.

In 2020, M&G QLD staff commenced writing a Standard Facility Report on behalf of NETS Australia, in response to sector demand.

In drafting the Report, M&G QLD looked at existing UK and USA models as well as various Australian adaptations of these documents to produce something specific for our sector's public museums and galleries. M&G QLD also consulted

with Queensland Art Gallery | Gallery of Modern Art's touring and registration staff, NETS Australia members, and National Public Galleries Alliance members.

In December 2020, M&G QLD distributed the draft Report to key Australian and New Zealand museum and gallery organisations for further feedback and potential endorsement. The intention is to finalise this work in 2021.

Funding Partners and Financial Support

The operations and programs of Museum and Gallery Services Queensland Limited, trading as Museums & Galleries Queensland (M&G QLD), have been made possible through the generosity and support of many individuals and organisations (acknowledged on pages 46–49 of this report), and by the continued support of its funding partners:

QUEENSLAND GOVERNMENT



M&G QLD received multi-year funding (2017–2020) from the Queensland Government through Arts Queensland through the Organisation Fund.

M&G QLD continued to tour its exhibition, *Reasonable & Necessary: prints and artist books by Artel Artists*, which is supported by a grant from Arts Queensland's Playing Queensland Fund.

Funding from Arts Queensland's Playing Queensland Fund also supported the 2020 itinerary of the touring exhibition, *Some people are stories*, managed by M&G QLD on behalf of FireWorks Gallery, Brisbane.

VISUAL ARTS AND CRAFT STRATEGY



M&G QLD received funding of \$55,000 from Arts Queensland in 2020 through the Visual Arts and Craft Strategy, an initiative of the Australian, State and Territory Governments.

GAMBLING COMMUNITY BENEFIT FUND

M&G QLD received a grant from the Queensland Government's Gambling Community Benefit Fund towards development of a new Company website.

AUSTRALIA COUNCIL FOR THE ARTS



M&G QLD received Australia Council for the Arts' Arts Projects for Organisations funding for 2018–2020.

AUSTRALIAN GOVERNMENT



Australian Government

Visions of Australia

In 2020, M&G QLD continued the national tour of its contemporary sculpture exhibition, *Safe Space*, supported by the Australian Government's Visions of Australia program.

Funding from the Australian Government's Visions of Australia program also supported the 2020 itineraries of the following touring exhibitions, managed by M&G QLD:

- *Artistic Endeavour: Contemporary botanical artists' response to the legacy of Banks, Solander and Parkinson*
- *Legacy: Reflections on Mabo*
- *Manggan – gather, gathers, gathering*
- *USE*

COMMUNITY HERITAGE GRANT

M&G QLD delivered a Skills Development Workshop Series in Collection Management; Significance Assessment; and Preventive Conservation and Disaster Preparedness in the Rockhampton, Gladstone and Banana Shire regions, QLD, in 2020 through a Community Heritage Grant awarded in 2019.

TIM FAIRFAX FAMILY FOUNDATION



M&G QLD received multi-year support from the Tim Fairfax Family Foundation for 2018–2020.

Sponsors, Industry Partners and In-Kind Support

M&G QLD's 2020 programs and events were partnered by or received support from the following individuals, organisations and businesses:

SECTOR DEVELOPMENT

COVID Response

Public Galleries Association of Victoria; Anne Robertson
Museums & Galleries of New South Wales; Michael Rolfe
Christine Ianna

National Public Galleries Alliance

Museums & Galleries Queensland (co-convener)
Public Galleries Association of Victoria (co-convener)
Museums & Galleries of New South Wales
Contemporary Art Tasmania
Public Galleries Queensland
Regional Galleries Association of South Australia
Art on the Move (WA)
Galleries West
Museum and Art Gallery of the Northern Territory
Regional and Public Galleries Association of NSW
University Art Museums Australia
Australian Craft and Design Centres

Draft Australian Standard Facility Report

NETS Australia members
National Public Galleries Alliance members
Queensland Art Gallery | Gallery of Modern Art; Terry Deen, Henri Van Noordenburg, Grant Kulmar

Other

M&G QLD thanks all of the museums and galleries who completed the 2020 Museum and Gallery Needs Survey and generously provided their feedback.

EXHIBITION DEVELOPMENT AND TOURING

National Exhibitions Touring Support (NETS) Australia

Art on the Move, WA
Artback NT: Arts Development and Touring
Contemporary Art Tasmania
Country Arts SA
Museums & Galleries of New South Wales
Museums & Galleries Queensland
NETS Victoria

Dissonant Rhythms

Ross Manning
Institute of Modern Art; Jenna Baldock, Warraba Weatherall, Liz Nowell
Curators: Aileen Burns, Johan Lundh, Madeleine King
Australia Council for the Arts
Visual Arts and Craft Strategy
Arts Queensland
Milani Gallery, Brisbane

Manggan – gather, gathers, gathering

Girringun Aboriginal Corporation
Girringun Aboriginal Arts Centre; Dr Valerie Keenan, Joann Russo
Curators: Dr Valerie Boll, Dr Valerie Keenan
South Australian Museum; Brian Oldman, Alice Beale
Kerry-Anne Reeves, Education consultant
Conrad Gargett
Urban Art Projects
Designfront; Leesa Hickey

Reasonable & Necessary: prints and artist books by Artel Artists

Artel Artists and Coordinators; Louise Taylor
CPL – Choice, Passion, Life; Rhys Kennedy; Julie Byth; Holly Scott; Jen Fleming

Curator: Lynne Seear
Jeremy Ruckels, filmmaker
Designfront; Leesa Hickey
Arthouse Northside
Cornerstone Press; Joey Lax
Arts Queensland
Visual Arts and Craft Strategy
Griffith University Printmakers Club
Hutchinson Builders
Moreton Bay Regional Council
Vanessa Xerri
IAS Fine Art Logistics

Safe Space

Logan Art Gallery; Robyn Daw, Michael Wardell,
Sophie Chapman, Lesley Nicholson
Curator: Christine Morrow
Artist film participants: Abdul-Rahman Abdullah,
Alex Seton, Sean Cordeiro, David Cross, Keg
de Souza, Franz Ehmann, Will French, Clare
Healy, Rosie Miller, Michelle Nikou, Christine
Morrow
Maitland Regional Art Gallery
Kerry-Anne Reeves, Education consultant
Carl Warner, David Thomas
Volt; Tom Everingham
Designfront; Leesa Hickey, Ben Smith
Arts Queensland, Queensland Arts Showcase
Program
Visual Arts and Craft Strategy
Australian Government, Visions of Australia

Some people are stories

FireWorks Gallery, Brisbane; Michael Eather,
Morgan Bundy-Wright
Curator: Michael Eather
Kerry-Anne Reeves, Education consultant
Designfront; Leesa Hickey
Professor Marcia Langton AM
Carl Warner, David Thomas
Arts Queensland, Playing Queensland Fund

Legacy: Reflections on Mabo

Umbrella Studio Contemporary Arts; Kate
O'Hara, Alan Marlowe, Daniel Qualischefski
Curators: Gail Mabo, Dr Jonathan McBurnie,
Kellie Williams
Designfront; Leesa Hickey
Tim Walsh, Education consultant
Queensland Government

Australian Government, Visions of Australia
Visual Arts and Craft Strategy
City of Townsville, North Australian Festival
of Arts, Australian Communities Foundation,
Wendy Brooks and partners

USE

Jewellers and Metalsmiths Group of Australia,
Queensland Chapter; Dr Elizabeth Shaw,
Catherine Large
Curator: Lisa Bryan-Brown
Artist film participants: Catherine Large, Clare
Poppi, Paola Raggo, Dr Elizabeth Shaw, Lisa
Bryan-Brown
Liveworm Studio, Griffith University
Queensland College of Art, Griffith University
Australian Government, Visions of Australia
Queensland Government, Queensland Arts
Showcase Program
Carl Warner, David Thomas

YOU ARE HERE 2 (The Incredible Lightness of Being)

Susan Lincoln
Warwick Art Gallery; Karina Devine
Queensland Government
Visual Arts and Craft Strategy
Australia Council for the Arts
IAS Fine Art Logistics
ShapeShift Design Technologies
Designfront; Leesa Hickey
McPherson's Consumer Products
Mitsubishi Pencil Company Ltd

Artistic Endeavour: Contemporary botanical artists' response to the legacy of Banks, Solander and Parkinson

Botanical Artists' Society of Queensland
Co-Curators: Beth Jackson, Dr Nita C Lester
Exhibition Coordinator: Kath Kerswell
Arts Queensland, Visual Arts and Craft Strategy
Australian Government, Visions of Australia
Regional Arts Development Fund, Queensland
Government and Moreton Bay Regional Council
Moreton Bay Regional Council
IAS Fine Art Logistics
Winsor & Newton
Lucy Dougall
Sonia Uranishi Communications
Simon Woods

Pattern and Print: Easton Pearson Archive

Museum of Brisbane; Renai Grace, Kathryn King,
Alix Perry, Meg McKavanagh
Dr Paul Eliadis
Australian Government, Visions of Australia
Gordon Darling Foundation

Demagogues and Megalomaniacs

Jay Younger
OneSpace Gallery; John Stafford, Jodie Cox,
Alicia Hollier

Dreamscapes: contemporary desert art

Andrew Arnott, Karin Schack

long water: fibre stories

Institute of Modern Art; Warraba Weatherall, Liz
Nowell
Curator: Freja Carmichael
Australia Council for the Arts
Australian Government, Visions of Australia
String Harvest

ZOONOSSES

Nicola Hooper

Other

M&G QLD thanks all of the artists involved in our
Exhibition Development and Touring Program,
and the artists' dealers/representatives
M&G QLD thanks all of the venues and their
Staff and Volunteers who participated in our
Exhibition Development and Touring Program
IAS Fine Art Logistics; Kingsley Munday, Ross
Hall, Kelly Baker
T.E.D. Fine Art; Simon Hartas, Tom Maguire
Michael Littler
PDF Pty Ltd
AON Risk Services Australia Ltd
Tim Fairfax Family Foundation
Exhibition advisory panel; Terry Deen, Tracy
Heathwood, Hannah Williamson

**TRAINING AND PROFESSIONAL
DEVELOPMENT****National Standards Taskforce**

Arts Tasmania
History Trust of South Australia
Museum and Art Gallery of the Northern Territory

Museums & Galleries of New South Wales
Museums & Galleries Queensland
Australian Museums and Galleries Association
(Victoria)

M&G QLD | UQAM Webinar Series

Nicola Garrett, Education and Public Programs
Officer, The University of Queensland Art
Museum
Danielle Harvey, The University of Queensland
Art Museum
Dr Caroline Wilson-Barnao, Lecturer, School
of Communication and Art, The University of
Queensland
Natasha Henry, Head of Marketing and
Communications, Art Gallery of New South
Wales
Elizabeth Gehde, Head of Marketing and Media
Relations, Queensland Museum Network
Michael Brennan, Director, Noosa Regional
Gallery
Crystal Stubbs, Director, East Gippsland Art
Gallery
Claudia Little, Venue Supervisor, Redcliffe
Museum
Bethany MacRae, Historical and Cultural Services
Coordinator, Hurstville Museum and Gallery
Tracey Heathwood, Artspace Mackay Director,
Mackay Regional Council
Jenny Harper, former Director, Christchurch Art
Gallery, New Zealand
Sarah Maltby, Director of Attractions, York
Archaeological Trust | The JORVIK Group, UK
Eve Haddow, Program Director and Lecturer,
Museum Studies, The University of Queensland
Colleen Dilenschneider, Chief Market
Engagement Officer, IMPACTS Research &
Development, USA
Tandi Palmer Williams, Managing Director,
Patternmakers
Kate O'Hara, Director, Umbrella Studio
Contemporary Arts

Securing Funding Workshop

Fran D'Castro, Coordinator, Community Heritage
Grants, National Library of Australia
Annie Wright, Ambassador, Foundation for Rural
and Regional Renewal
Mount Isa Civic Centre
Kerryanne Farrer, Executive Officer, Flying Arts
Alliance

Join the Conversation

Online Discussion Series

M&G QLD thanks all of the participants and contributors who attended the online discussions to share their experiences and learnings

Katie Gallacher, Ancient History Teacher, James Nash State High School, Gympie
Kirsten Murray, Community Education Coordinator, Supreme Court Library Queensland
Liz Clout, Head of Department – The Arts, Nambour State College
Rebecca McDuff, Gallery Director, Bundaberg Regional Galleries
Terry Deen, Head of Learning, Queensland Art Gallery | Gallery of Modern Art
Michelle Stafford, Sector Development Manager, Volunteering Queensland
Scott Martin, Executive Director, Business Performance and Infrastructure, Arts Queensland
Susan Richer, Director, Development, Arts Queensland
Jim Thompson, CEO and Director, Queensland Museum Network

Label Writing Workshop

Supreme Court Library Queensland
Samantha Littley, Independent Writer and Curator

Skills Development Workshops

Community Heritage Grants Program
Lisa Jones, Museum Curator and Consultant
Banana Shire Regional Art Gallery
Christine Ianna, Conservator and Museum Consultant
Rockhampton Art Gallery
Dr Melanie Piddocke, Museum Development Officer – Central Queensland, Queensland Museum Network
Gladstone Regional Art Gallery and Museum

Other

Jane Willcock, Senior Registrar & Museum Operations Coordinator, Anthropology Museum and Lecturer, Museum Studies, The University of Queensland
Dr Diana Young, Museum Studies, The University of Queensland

Michele Pickering, Coordinator, Brisbane's Living Heritage Network

Museum Development Officers, Queensland Museum Network

Peter Connell, Coordinator, Cultural Heritage Services Team, Sunshine Coast Council

Ann Podobnik, Cultural Heritage Support Officer, Cultural Heritage Services Team, Sunshine Coast Council

Tamara Lavrencic, Museums & Galleries of New South Wales

Emily Cullen, Museums & Galleries of New South Wales

David Swift, Director, Queensland State Office, National Archives of Australia

Queensland Maritime Museum

M&G QLD thanks all of the participants and contributors to our events and professional development programs

INFORMATION AND COMMUNICATION

Mac1 Pty Ltd; John Newcombe

Matt Heywood, Lance IT

Flipnet Pty Ltd; Andrew Welstead, Sarah Coates

Wesley Mission Queensland

Qantas Founders Museum, Longreach

Contributing writers

ArtsHub; Gina Fairley

Museums & Galleries of New South Wales;

Michael Rolfe

TENANCY: HENDRA ANNEXE, QUEENSLAND MUSEUM NETWORK

Queensland Museum Network

Jim Thompson

Brian Flynn

Matthew Sansom

Frank Fiege

AUDITING

Brian Tucker Audit

M&G QLD thanks everyone who supported and contributed to our 2020 delivery. Our sincere apologies if anyone has been inadvertently omitted.

Appendix 1:

M&G QLD Company Member:

Australian Museums and Galleries Association

QUEENSLAND EXECUTIVE COMMITTEE

President: Emma Bain, Gallery Director, Redland Art Gallery

Vice President: Trudie Leigo, Consultant, Trudie Leigo Projects

Secretary: Josef Hextall, Consultant, Hexhibitions (1 January – 17 November 2020)

Treasurer: Brian Tucker CPA

Ordinary members:

Jaimie Cook, Foundation Director, Gympie Bone Museum (1 January – 30 June 2020)

Rebecca McDuff, Gallery Director, Bundaberg Regional Galleries

Mary Findlay, Gallery Director, Stanthorpe Regional Art Gallery (3 March – 31 December 2020)

Charla Strelan, Curator, Supreme Court Library Queensland

Michael Wardell, Art Gallery Coordinator, Logan Art Gallery

Appendix 2:

M&G QLD Company Member:

Public Galleries Queensland

MANAGEMENT COMMITTEE

President: Claire Sourgnès, CEO, artisan

Vice President: Anna Thurgood, Engagement Officer, State Library of Queensland

Secretary/Treasurer: Brian Tucker CPA

Ordinary members:

Bianca Acimovic, Gallery Director, Rockhampton Art Gallery (16 September – 31 December 2020)

Justin Bishop, Director, Black Square Arts, Cairns (1 January – 16 September 2020)

Tracy Cooper-Lavery, Gallery Director, HOTA Home of the Arts, Gold Coast

Tracey Heathwood, Director, Artspace Mackay

Nina Shadforth, Collections Curator, Caloundra Regional Gallery

Australian Museums and Galleries Association (Queensland) | Public Galleries Queensland
Membership Officer: Karike Ashworth

Appendix 3:

Training and Professional Development and Sector Development Programs: 2020 Events

NO. = Number of participants including presenters and M&G QLD staff.

518 people participated in 16 M&G QLD Training and Professional Development Program activities delivered in 2020.

DATE	EVENT	VENUE	SPEAKERS/STAFF	NO.
21 February AM	<i>The Object of Labels – Writing Interpretive Text for Exhibitions</i>	Supreme Court Library Queensland, Brisbane	Samantha Littley M&G QLD staff: Leisha Walker, Melissa Fletcher	23
21 February PM	<i>The Object of Labels – Writing Interpretive Text for Exhibitions</i>	Supreme Court Library Queensland, Brisbane	Samantha Littley M&G QLD staff: Leisha Walker	23
11 March	<i>Securing Funding Workshop</i>	Mount Isa Civic Centre	Leisha Walker, Debra Beattie, Fran D’Castro, Kerryanne Farrer, Annie Wright	7
23 April	<i>Join the Conversation: How are you connecting with your audiences? 1</i>	Zoom	Leisha Walker M&G QLD staff: Bonnie Melrose, Rebekah Butler, Melissa Fletcher	18
23 April	<i>Join the Conversation: How are you connecting with your audiences? 2</i>	Zoom	Leisha Walker M&G QLD staff: Debra Beattie, Andrea Higgins	20
14 May	<i>Join the Conversation: Developing education resources</i>	Zoom	Liz Clout, Rebecca McDuff, Terry Deen, Katie Gallacher, Kirsten Murray, Bonnie Melrose, Leisha Walker M&G QLD staff: Debra Beattie, Andrea Higgins, Melissa Fletcher	58

DATE	EVENT	VENUE	SPEAKERS/STAFF	NO.
2 June	The University of Queensland Museum Studies presentation	Recording	Leisha Walker	Not known
4 June	<i>Join the Conversation: Re-opening strategies and tips</i>	Zoom	Michelle Stafford, Scott Martin, Susan Richer, Jim Thompson, Rebekah Butler, Leisha Walker M&G QLD staff: Debra Beattie, Andrea Higgins, Melissa Fletcher, Bonnie Melrose	87
9 July	<i>Audience Recovery Seminar Series: Marketing Strategies</i>	Zoom	Natasha Henry, Elizabeth Gehde, Michael Brennan, Dr Caroline Wilson-Barnao, Rebekah Butler, Leisha Walker M&G QLD staff: Andrea Higgins, Bonnie Melrose, Melissa Fletcher	64
16 July	<i>Audience Recovery Seminar Series: Community Engagement</i>	Zoom	Crystal Stubbs, Claudia Little, Bethany MacRae, Tracey Heathwood, Leisha Walker M&G QLD staff: Andrea Higgins, Bonnie Melrose, Melissa Fletcher, Rebekah Butler	42
23 July	<i>Audience Recovery Seminar Series: Visitor Re-engagement</i>	Zoom	Jenny Harper, Sarah Maltby, Eve Haddow, Leisha Walker M&G QLD staff: Andrea Higgins, Bonnie Melrose, Rebekah Butler	49
30 July	<i>Audience Recovery Seminar Series: Visitor Intentions</i>	Zoom	Colleen Dilenschneider, Tandi Palmer Williams, Kate O'Hara, Leisha Walker M&G QLD staff: Andrea Higgins, Bonnie Melrose, Melissa Fletcher	48
6 September	Collection Management Workshop (CHG)	Banana Regional Council Meeting Room, Biloela	Lisa Jones M&G QLD staff: Leisha Walker	13
7 September	Preventive Conservation & Disaster Preparedness Workshop (CHG)	Rockhampton Art Gallery	Christine Ianna M&G QLD staff: Leisha Walker	24

DATE	EVENT	VENUE	SPEAKERS/STAFF	NO.
24 October	Significance Assessment Workshop (CHG)	Gladstone Regional Art Gallery and Museum	Melanie Piddocke M&G QLD staff: Leisha Walker	13
29 October	<i>Join the Conversation: Re-engaging volunteers</i>	Zoom	Leisha Walker M&G QLD staff: Andrea Higgins, Bonnie Melrose	29

Appendix 4:

Training and Professional Development and Sector Development Programs

2020 Presentation and Video Access

M&G QLD | UQAM Webinar Series

Recordings:

- *Marketing Strategies*, 9 July 2020
- *Community Engagement*, 16 July 2020
- *Visitor Re-engagement*, 23 July 2020
- *Visitor Intentions*, 30 July 2020

Join the Conversation Online Discussion Series

Recordings:

- *Developing education resources*, 14 May 2020
- *Re-opening strategies and tips*, 4 June 2020

Appendix 5:

2020 M&G QLD Touring Exhibition Program and Statistics

NO. OF EXHIBITIONS: 9

Artistic Endeavour: Contemporary botanical artists' response to the legacy of Banks, Solander and Parkinson

Venue	Venues	Days	Attendance	Artists	Curators
Redland Art Gallery, QLD		10	758		
	1	10	758	33	2

Dissonant Rhythms: Ross Manning

Venue	Venues	Days	Attendance	Artists	Curators
Latrobe Regional Gallery, VIC		4	430		
Bank Art Museum Moree, NSW		39	353		
Lismore Regional Gallery, NSW		45	5,798		
Western Plains Cultural Centre, Dubbo, NSW		51	16,027		
	4	139	22,608	1	3

Legacy: Reflections on Mabo

Venue	Venues	Days	Attendance	Artists	Curators
Maitland Regional Art Gallery, NSW		20	4,665		
Hawkesbury Regional Gallery, NSW		38	1,276		
Burrinja, Dandenong Ranges Cultural Centre, VIC*		0	0		
	3	58	5,941	25	3

* The exhibition was displayed at this venue but did not open to the public in 2020 due to COVID.

Manggan – gather, gathers, gathering

Venue	Venues	Days	Attendance	Artists	Curators
Bunjilaka, Melbourne Museum, VIC		27	31,004		
Port Pirie Regional Art Gallery, SA		37	1,874		
Nautilus Arts Centre, Port Lincoln, SA		84	2,609		
Museum of Art and Culture Lake Macquarie, NSW		38	2,489		
Caboolture Regional Gallery, QLD		12	500		
	5	198	38,476	19	2

Reasonable & Necessary: prints and artist books by Artel Artists

Venue	Venues	Days	Attendance	Artists	Curators
Artspace Mackay, QLD		16	560		
Emerald Art Gallery, QLD		36	840		
Mundubbera Regional Art Gallery, QLD		44	45		
Redland Art Gallery, QLD		32	477		
Warwick Art Gallery, QLD		19	390		
	5	147	2,312	33	1

Safe Space contemporary sculpture

Venue	Venues	Days	Attendance	Artists	Curators
Toowoomba Regional Art Gallery, QLD		24	1,760		
Maitland Regional Art Gallery, NSW		63	5,154		
Devonport Regional Art Gallery, TAS		36	799		
Swan Hill Regional Art Gallery, VIC		25	678		
	4	148	8,391	12	1

Some people are stories: Vincent Serico

Venue	Venues	Days	Attendance	Artists	Curators
Pine Rivers Art Gallery, QLD		14	287		
Matthew Flinders Gallery, Bribie Island Community Arts Centre, QLD		7	892		
Wondai Regional Art Gallery, QLD		45	750		
	3	66	1,929	1	1

USE

Venue	Venues	Days	Attendance	Artists	Curators
Banana Shire Regional Art Gallery, Biloela, QLD		15	73		
New England Regional Art Gallery, Armidale, NSW		72	3,802		
Hurstville Museum & Gallery, NSW		72	472		
Port Pirie Regional Art Gallery, SA		16	797		
	4	175	5,144	17	1

YOU ARE HERE 2 (The Incredible Lightness of Being): Susan Lincoln

Venue	Venues	Days	Attendance	Artists	Curators
Warwick Art Gallery, QLD		28	947		
	1	28	947	1	

GRAND TOTAL	30	969	86,506	142	14
--------------------	-----------	------------	---------------	------------	-----------

ACKNOWLEDGEMENT OF COUNTRY

We acknowledge the Traditional Owners of the land on which we work and live,
and recognise their continuing connection to land, water and community.

We pay respect to Elders past, present and emerging.



VISION

To ensure a future where museums, galleries and keeping places are relevant,
accessible and are valued by their communities.

MISSION

To promote, support and provide services to foster excellence in
museums, galleries and keeping places.

122 Gerler Road, Hendra Qld 4011

p: 07 3059 9740

e: information@magsq.com.au

w: www.magsq.com.au

Museum and Gallery Services Queensland Limited

trading as Museums & Galleries Queensland

Company Members

Public Galleries Queensland

Australian Museums and Galleries Association Queensland

