

Billy Missi

Billy Missi Untitled | *Constellation and Kinship*, 2009, vinyl-cut printed in black ink from one block, matrix: 645 x 90 mm. Edition: workshop proof, printer: Theo Tremblay

Expression of Interest

Billy Missi'n Wakain Thamai

National Touring Exhibition for 2024 - 2027

About the Artist



Installation view, *Billy Missi'n Wakain Thamai*, NorthSite Contemporary Arts, Bulmba Ja, Cairns, QLD, 2020. Photographer: Michael Marzik

Billy Missi was born on Mabuiag Island in 1970. Informed by a childhood engaged with storytelling, song and dance traditions of the Wagedagam Tribe, Missi's inherited creativity, combined with his passion and experience growing up with living customary practices, prepared him for his journey into art.

Missi felt the impulse to create when he first encountered the works of contemporary Torres Strait Islander artists in 1992, but it was not until 1999 that he felt ready to devote himself to artistic pursuits full-time. With only minimal formal training on Moa Island, he rapidly worked his way to the forefront of contemporary Zenadh-Kes (Western Torres Strait) printmaking. Missi skilfully combined traditional carving techniques, iconography and his distinct fish-bone patterns with the Western medium of the linocut to forge a new aesthetic and print making movement in the 1990s alongside peers, an aesthetic firmly based on traditional Torres Strait Islander principles.

Billy Missi gained international recognition prior to his passing in 2012.

About the Exhibition

This is a comprehensive exhibition of printmaking by the artist Billy Missi (1970 - 2012). Working with the family and friends of the late Billy Missi, the Curator, Russell Milledge, and NorthSite Contemporary Arts, presented the retrospective exhibition, *Billy Missi'n Wakain Thamai*, in 2020.

The bilingual retrospective exhibition honours the artistic legacy of Missi, a prominent figure in the establishment of the Torres Strait Island printmaking movement. Billy Missi is remembered as a prolific artist and proactive maintainer of language and culture for his people. Rare and never-before-exhibited monoprints and etchings are included in this exhibition, alongside iconic linoprints by the artist.

The exhibition presents contemporary Torres Strait Islander culture and customs, paving the way for audiences to appreciate the rich collection of images and stories that speak to the artist's way of life and legacy.



Installation view, *Billy Missi'n Wakain Thamai*, NorthSite Contemporary Arts, Bulmba Ja, Cairns, 2020. Photographer: Michael Marzik

Exhibition Themes



Installation view, *Billy Missi'n Wakain Thamai*, NorthSite Contemporary Arts, Bulmba Ja, Cairns, QLD, 2020. Photographer: Michael Marzik

Sagulal

Koey sagulal adhaka thamayzimal koey thonarka. Warupaw uu ngoedhe dhuyuman zibran mathaman yadpalgan kukiyaw thonar. Arin ngapa angayk, kayin danalayg.



Zugubal

Thithuyin a zugubal dapar umngu padaka ukaman. Setha zugubal ngoelmun yaabu danthayayk, ngoelmunika danalayg midhikidh laganu a malunu.



Malu Ya

Malunu adhal ngoey koey koelsalmal guuba a bubu midhikidh tharthayika. Ngoey uruyl sesthamayk. Sena ngulayg kidhikidh poeybayzinga. Maiuw ngulayg a thonaral midhikidh tharthayimik.



Maram Ar Pui'lw Aidail

Ay bawdhaw thonar kaymel ariw thonariya. Boeradharka a aydal puyika sena aari thonartidayzinga.



Sapural

Bupaw puyin noe ay thayan, sapuran mina koeyma ay purthan. Thana koey goersar, mura kaymel urimik.



Buai Girelal

Ngoelmun yawadhan nu muynu apasi mina koeynga. Buwayka apasi.



Ceremony

Choreographed dances commemorate special occasions. With a sound like approaching thunder, the warup expresses the coming of the monsoon and the rain that brings new life.

Stars

The stars connect the skies with the horizon. The constellations are our orientation to the environment and surroundings, both land and sea.

Sea

At sea we are sensitive to seasonal changes. We come to expect certain animals during particular times. This is part of the knowledge learned about seasons and the sea.

Plant Cultivation

Seasonal crops are associated with the coming of the rains. For ground and tree foods each type of seasonal rain is aligned with stages of cultivation.

Flying Fox

As the wild trees bear fruit, the flying foxes gorge themselves, while flocking together in large numbers.

Kinship

Our learned protocols include the respect for family and humble gratitude towards acknowledging kinship.

Artwork Snapshot



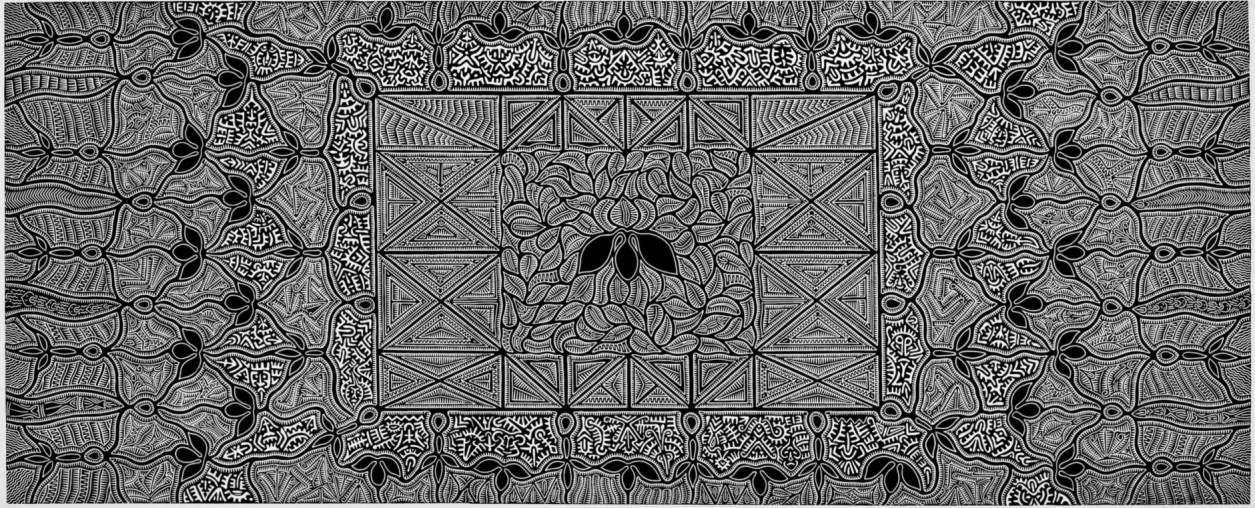
Billy Missi, *Ap aw Aidal | Food from the Garden*, 2000, vinyl-cut, printed in colour, matrix: 295 x 445 mm. Edition: artists' proof, printer: Theo Tremblay



L: Billy Missi, *Kaerkethal Ziyawi | Angry Clouds*, 2012, colour monoprint, matrix: 800 x 600 mm, printer: Theo Tremblay



R: Billy Missi, *Pawi Pawin Maika | Lightning*, 2012, colour monoprint, matrix: 800 x 600 mm, printer: Theo Tremblay



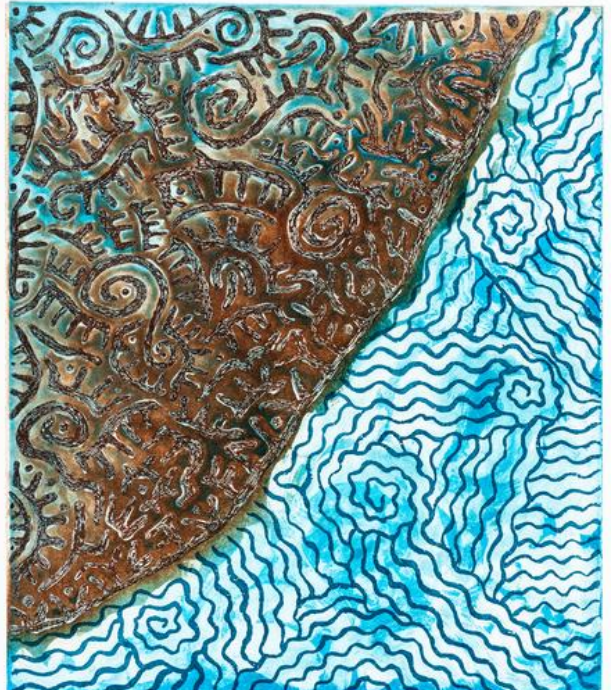
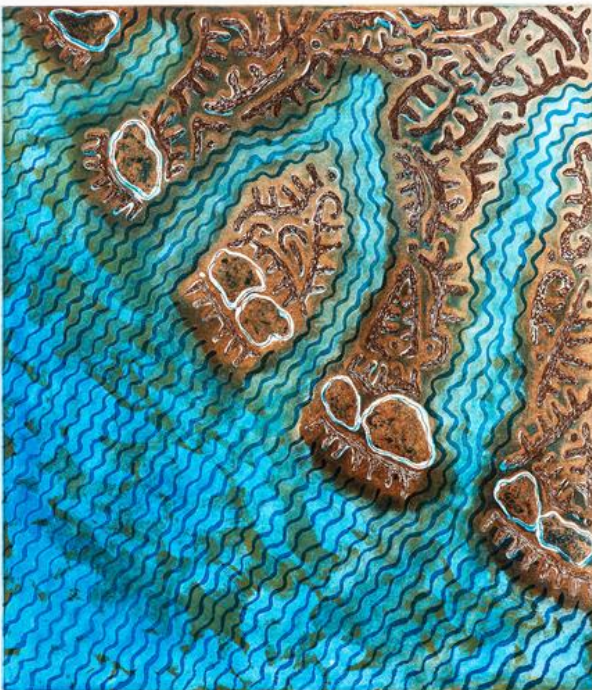
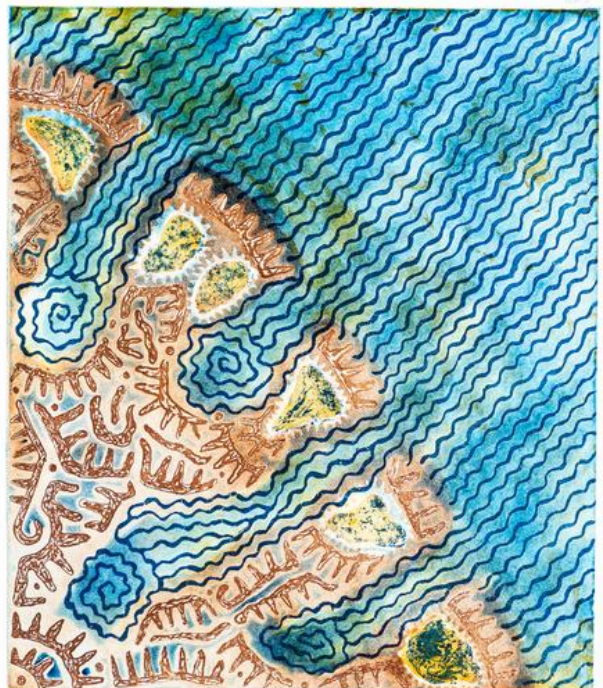
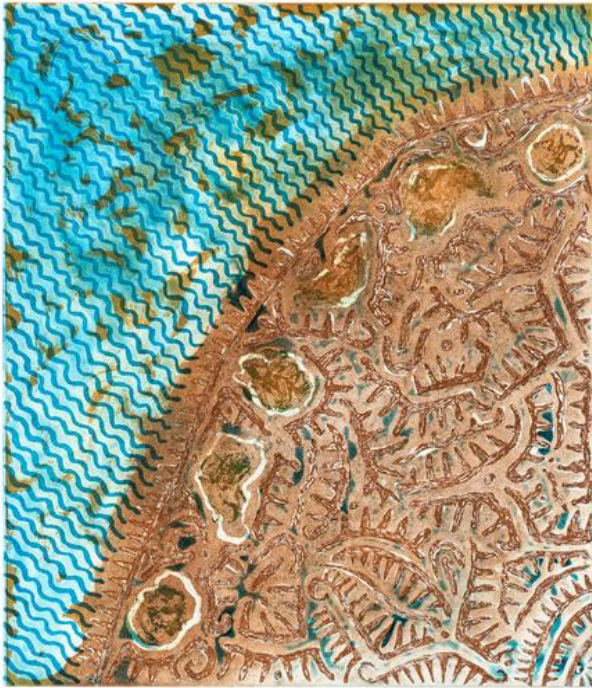
Billy Missi, *Urapun Kai Buai | One Big Kin*, 2007, linocut printed in black ink from one block, matrix: 1000 x 2500 mm
Publisher: Djumbunij Press, KickArts Fine Art Printmaking, printer: Theo Tremblay.
Courtesy of NorthSite Contemporary Arts and the Billy Missi Estate.



Billy Missi, *Warpin Naradh Fish Bones*, 2009, lithograph on stone, printed in colour, matrix: 500 x 300 mm. Edition: workshop proof, printer: Theo Tremblay



Billy Missi, *Mudhaw Waru | Sheltered Turtles Behind the Reef*, 2007, linocut printed in black ink from one block, hand coloured Kaidaral, paper: Arches BFK 300 gsm, matrix: 895 x 700 mm. Edition: artists' proof.
Publisher: Djumbunij Press, KickArts Fine Art Printmaking, printer: Ron McBurnie



Billy Missi, *Untitled Mazau Urga | Untitled Sea Currents*, 2012, etching printed in colour reduction from four blocks, paper: Hahnemüle 350 gsm, matrix: 490 x 420 mm each. Not editioned: colour trial proof. Publisher: Djumbunij Press, KickArts Fine Art Printmaking, printer: Elizabeth Hunter

Public Programs



Image: Performance by Maliuilgal Dance Troupe at the opening of *Billy Missi'n Wakain Thamai*, Saturday 15 August, 2020 at NorthSite Contemporary Arts, Bulmba Ja, Cairns, QLD. Photography: Phisch Creative.

Public program options include:

- Opening Speakers subject to availability and budget/funding:
 - Cr. Gabriel Bani Deputy Mayor, Torres Shire Council and Wagadagam Tribal Elder and relative
 - Peggy Missi, sister and former performer
 - Billy Missi Estate or other nominated cultural representatives.
- Dance performance by Maluilgal Dance Troupe comprising relatives of Billy Missi, subject to the venue's budget.
- Curator's floor talk by either exhibition Curator, Russell Milledge, or NorthSite Contemporary Arts Curator, Aven Noah Jr.
- Relief lino printing workshops - kits to be provided by NorthSite Contemporary Arts with instructions for venues to self-deliver; or engage master printmaker (additional cost for venues).

Exhibition Support

M&G QLD will support your venue



01

Logistics

Freight
Insurance
Professional Crating

02

Display

Curatorial Support
Exhibition Instruction Manual
Installation Support
Interpretive / Didactic Panels
Artwork Labels
Accessibility Kit

03

Resources

Public Programs
Media Kit
M&G QLD Marketing and Promotion
Education Resources
Exhibition Catalogue
Welcome to Country

Exhibition Details

Running Metres

Approximately 80 metres

Exhibition can be condensed for smaller venues, subject to approval.

Display

49 2D Framed Artworks

Artist Documentary (projection)

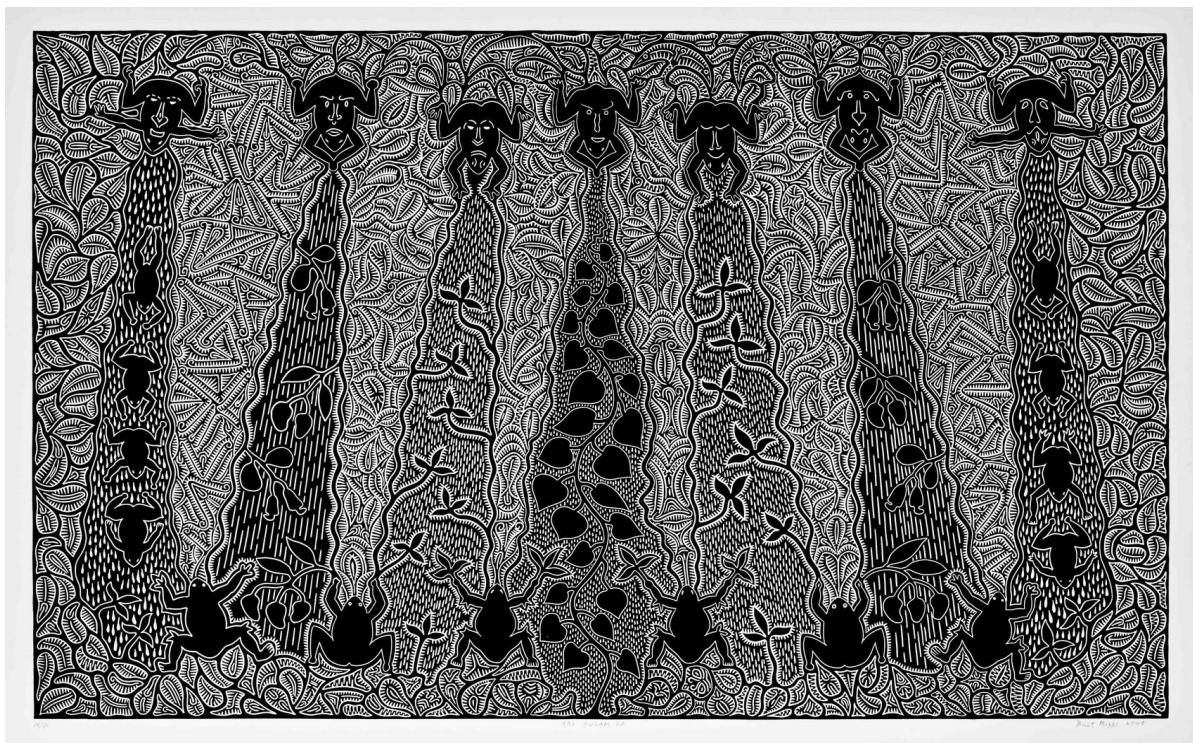
Public Programs

1. Exhibition floor talk
2. Dance performance at opening event*
3. Print making workshop*
4. Education Resource

Hire Fee

\$4500 + GST

* additional charges may apply



Billy Missi, *Ari Sulam Ka | Calling on the Rain*, 2007, linocut printed in black ink from one block, paper: Hahnemüle 350 gsm, matrix: 1005 x 1615 mm
Edition: workshop proof. Publisher: Djumbunij Press, KickArts Fine Art Printmaking, printer: Theo Tremblay

Let's Get In Touch

Andrea Higgins

Exhibition Program Officer

Museums and Galleries Queensland



andrea.higgins@magsq.com.au



07 3059 9746



magsq.com.au

touring partner



NORTH SITE

Museum & Gallery Services Queensland Ltd trading as Museums & Galleries Queensland - ABN 32 109 874 811 - is supported by the Queensland Government through Arts Queensland, part of the Department of Communities, Housing and Digital Economy. Museums & Galleries Queensland is also supported by the Tim Fairfax Family Foundation and receives funds from Creative Partnerships Australia through the Australian Cultural Fund.